

Orders / Sales Help: 732-842-4324

 *La Rosa's* 
Since 1901

Wholesale Cookie Product Sheets



COOKIES



Product Specification

2 lb. Assorted Cookie Trays - Item 1803

Net Case Weight	8 lbs.
Gross Case Wt.	9 lbs.
Inner Case Pack	4 ct.
Shelf Life	6 Months
Case Dimensions	22.56 X 19.25 X 6.625
Case Cube	1.66
Storage	Dry
Lead Time	2 Weeks
Pallet tie/high	4/10

Ingredients: ENRICHED WHEAT FLOUR (bleached wheat flour, malted barley flour, niacin, reduced iron, potassium bromate, thiamine mononitrate, riboflavin, folic acid) , UNENRICHED WHEAT FLOUR, SHORTENING (palm oil), SUGAR, EGGS, WATER, BAKING POWDER, SALT, FLAVORS, AMONIA, RED CHERRIES, GREEN CHERRIES, CHOCOLATE FUDGE (sugar, fudge base (vegetable shortening, part hydrated (soy, cottonseed and/or canola oils) cocoa (processed with alkali), corn syrup solids, soy oil), vegetable shortening, part hydrated (palm and soy bean oils), water), CHOCOLATE COATING (sugar, vegetable shortening (blend of partially hydrogenated soybean & coconut oils, hydrogenated cottonseed and/or palm oils. Cocoa (alkali processed), sorbitan monosterate, natural & artificial flavors, polysorbate 60, salt.), F D & C YELLOW #5 & #6, RED #40 , RED #3,(ERYTHOSINE) BLUE #1.

Lot Code Explanation (Julian Date): The first number of the Julian Date represents the last number of the year. The next three numbers represent the day of manufacture. Ie: **5101** means it was manufactured in **2015** on the **101st** day.

Allergens: Wheat, eggs, soy.

Kosher Status : No

Country of Origin: United States of America

Allergen warning: This product was made in a facility that may also use common food allergens including milk, peanuts, tree nuts, eggs and soybean.

GMO Status: Based on information provided to us by our vendors, we cannot guarantee that this item is genetically modified organism (GMO) free.

MSDS: All items manufactured by La Rosa Bakery Inc. contains ingredients which are on the GRAS (generally recognized as safe) list. These food items do not require a MSDS (material safety data sheet) and are made in compliance with the United States of America Food, Drug and Cosmetic Act.

Certificate of Manufacture: La Rosa Bakery, Inc. certifies that all products are prepared, processed and packaged in a facility inspected by the Food and Drug Administration as well as a Third Party Auditor and applicable state or local health agencies in the United States of America, using only ingredients and packaging that are approved for food use.

Nutrition Facts			
Serving Size 2 oz (57g)			
Servings per Container 16			
Amount per Serving			
Calories	130	Calories from Fat 120	
% Daily Value*			
Total Fat	14g		22 %
Saturated Fat	7g		34 %
Trans Fat	0g		
Cholesterol	0mg		0 %
Sodium	105mg		4 %
Total Carbohydrate	28g		9 %
Dietary Fiber	1g		3 %
Sugars	12g		
Protein	3g		
Vitamin A	0 %	Vitamin C	0 %
Calcium	2 %	Iron	6 %
* Percent Daily Values are based on a 2,000 calorie diet. Your daily values may be higher or lower depending on your calorie needs.			
	Calories	2,000	2,500
Total Fat	Less than	65g	80g
Sat Fat	Less than	20g	25g
Cholesterol	Less than	300mg	300mg
Sodium	Less than	2,400mg	2,400mg
Total Carbohydrate		300g	375g
Dietary Fiber		25g	30g
Calories per gram			
Fat 9 • Carbohydrates 4 • Protein 4			

Case UPC



Case Label

2 LB ASSORTED COOKE TRAYS	
<p>Ingredients: ENRICHED WHEAT FLOUR (bleached wheat flour, malted barley flour, niacin, reduced iron, potassium bromate, thiamine mononitrate, riboflavin, folic acid) , UNENRICHED WHEAT FLOUR, SHORTENING (palm oil), SUGAR, EGGS, WATER, BAKING POWDER, SALT, FLAVORS, AMONIA, RED CHERRIES, GREEN CHERRIES, CHOCOLATE FUDGE (sugar, fudge base (vegetable shortening, part hydrated (soy, cottonseed and/or canola oils) cocoa (processed with alkali), corn syrup solids, soy oil), vegetable shortening, part hydrated (palm and soy bean oils), water), CHOCOLATE COATING (sugar, vegetable shortening (blend of partially hydrogenated soybean & coconut oils, hydrogenated cottonseed and/or palm oils. Cocoa (alkali processed), sorbitan monosterate, natural & artificial flavors, polysorbate 60, salt.), F D & C YELLOW #5 & #6, RED #40 , RED #3,(ERYTHOSINE) BLUE #1.</p>	
Contains: Wheat, eggs, soy.	
4 - 2 LB TRAYS - NET WT 9 LBS - REF # 1803 MANUFACTURED BY: LA ROSA BAKERY, INC. SHREWSBURY, NJ 07702	



Product Specification

Almond Macaroons, Item 1764



Net Case Weight	10 lbs.
Gross Case Wt.	11 lbs
Inner Case Pack	2/5 lb. Trays
Shelf Life	10-12 Weeks
Case Dimensions	17.75 X 15.5 X 5.1875
Case Cube	0.83
Storage	Cool
Lead Time	2 Weeks
Pallet tie/high	6/10

Ingredients: ENRICHED WHEAT FLOUR (bleached wheat flour, malted barley flour, niacin, reduced iron, potassium bromate, thiamine mononitrate, riboflavin, folic acid), EGG WHITES, MACAROOON PASTE (apricot kernels, sugar, almonds), SUGAR, SLICED ALMONDS, VANILLA.

Lot Code Explanation (Julian Date): The first number of the Julian Date represents the last number of the year. The next three numbers represent the day of manufacture. I.e.: **5101** means it was manufactured in **2015** on the **101st** day.

Allergens: Wheat, eggs, nuts(almonds).

Kosher Status : No

Country of Origin: United States of America

Allergen warning: This product was made in a facility that may also use common food allergens including milk, peanuts, tree nuts, eggs and soybean.

GMO Status: Based on information provided to us by our vendors, we cannot guarantee that this item is genetically modified organism (GMO) free.

MSDS: All items manufactured by La Rosa Bakery Inc. contains ingredients which are on the GRAS (generally recognized as safe) list. These food items do not require a MSDS (material safety data sheet) and are made in compliance with the United States of America Food, Drug and Cosmetic Act.

Certificate of Manufacture: La Rosa Bakery, Inc. certifies that all products are prepared, processed and packaged in a facility inspected by the Food and Drug Administration as well as a Third Party Auditor and applicable state or local health agencies in the United States of America, using only ingredients and packaging that are approved for food use.

Nutrition Facts

Serving Size 2 oz (57g)
Servings per Container

Amount per Serving

Calories 200 Calories from Fat 80

% Daily Value*

Total Fat 9g **13%**

 Saturated Fat 0.5g **3%**

 Trans Fat 0g

Cholesterol 0mg **0%**

Sodium 10mg **0%**

Total Carbohydrate 32g **11%**

 Dietary Fiber 0g **0%**

 Sugars 28g

Protein 4g

Vitamin A **0%** • Vitamin C **0%**

Calcium **4%** • Iron **4%**

* Percent Daily Values are based on a 2,000 calorie diet. Your daily values may be higher or lower depending on your calorie needs.

	Calories	2,000	2,500
Total Fat	Less than	65g	80g
Sat Fat	Less than	20g	25g
Cholesterol	Less than	300mg	300mg
Sodium	Less than	2,400mg	2,400mg
Total Carbohydrate		300g	375g
Dietary Fiber		25g	30g

Calories per gram
Fat 9 • Carbohydrates 4 • Protein 4

Case UPC



Case Label

ALMOND MACAROONS

INGREDIENTS: UN-ENRICHED WHEAT FLOUR, EGG WHITES, MACAROOON PASTE (apricot kernels, sugar, almonds), SUGAR, SLICED ALMONDS, VANILLA.

Contains: Wheat, eggs, nuts (almonds).

NET WT. 10 LBS. REF # 1764

MANUFACTURED BY: LA ROSA BAKERY, INC.
SHREWSBURY, NJ 07702



Product Specification

Apricot Linzer Tart, Item 1722



Ingredients: UN-ENRICHED WHEAT FLOUR, SHORTENING (palm oil), SUGAR, APRICOT JAM (sugar, water, apricot puree, sugar syrup, high fructose corn syrup, citric acid, pectin), EGGS. SALT, FLAVORS (F D & C YELLOW #5 & #6)

Net Case Weight	10 lbs.
Gross Case Wt.	11 lbs.
Inner Case Pack	2/5 lb. Trays
Shelf Life	10-12 Weeks
Case Dimensions	17.75 X 15.5 X 5.1875
Case Cube	0.83
Storage	Cool
Lead Time	2 Weeks
Pallet tie/high	6/10

Lot Code Explanation (Julian Date): The first number of the Julian Date represents the last number of the year. The next three numbers represent the day of manufacture. I.e.: **5101** means it was manufactured in 20**15** on the **101**st day.

Allergens: Wheat, eggs.

Kosher Status : No

Country of Origin: United States of America

Allergen warning: This product was made in a facility that may also use common food allergens including milk, peanuts, tree nuts, eggs and soybean.

GMO Status: Based on information provided to us by our vendors, we cannot guarantee that this item is genetically modified organism (GMO) free.

MSDS: All items manufactured by La Rosa Bakery Inc. contains ingredients which are on the GRAS (generally recognized as safe) list. These food items do not require a MSDS (material safety data sheet) and are made in compliance with the United States of America Food, Drug and Cosmetic Act.

Certificate of Manufacture: La Rosa Bakery, Inc. certifies that all products are prepared, processed and packaged in a facility inspected by the Food and Drug Administration as well as a Third Party Auditor and applicable state or local health agencies in the United States of America, using only ingredients and packaging that are approved for food use.

Nutrition Facts	
Serving Size 2 oz (57g)	
Servings per Container	
Amount per Serving	
Calories 200	Calories from Fat 70
% Daily Value*	
Total Fat 8g	13 %
Saturated Fat 2.5g	14 %
<i>Trans</i> Fat 0g	
Cholesterol 0mg	0 %
Sodium 50mg	2 %
Total Carbohydrate 31g	10 %
Dietary Fiber 0g	0 %
Sugars 12g	
Protein 2g	
Vitamin A 0 %	• Vitamin C 2 %
Calcium 2 %	• Iron 4 %
* Percent Daily Values are based on a 2,000 calorie diet. Your daily values may be higher or lower depending on your calorie needs.	
	Calories 2,000 2,500
Total Fat	Less than 65g 80g
Sat Fat	Less than 20g 25g
Cholesterol	Less than 300mg 300mg
Sodium	Less than 2,400mg 2,400mg
Total Carbohydrate	300g 375g
Dietary Fiber	25g 30g
Calories per gram	
Fat 9	• Carbohydrates 4 • Protein 4

Case UPC



Case Label

CS APRICOT LINZER TART	
INGREDIENTS: UN-ENRICHED WHEAT FLOUR, SHORTENING (PALM OIL), SUGAR, APRICOT JAM (SUGAR, WATER, APRICOT PUREE, SUGAR SYRUP, HIGH FRUCTOSE CORN SYRUP, CITRIC ACID, PECTIN), EGGS. SALT, FLAVORS (F D & C YELLOW #5 & #6)	
NET WT 10 LBS	REF # 1722
MANUFACTURED BY: LA ROSA BAKERY INC. SHREWSBURY NJ 07702	



Product Specification

Apricot Sandwich Cookie, Item 1710



Net Case Weight	10 Lbs.
Gross Case Wt.	11 Lbs.
Inner Case Pack	2/5 Lb. Trays
Shelf Life	10-12 Weeks
Case Dimensions	17.75 X 15.5 X 5.1875
Case Cube	0.83
Storage	Cool
Lead Time	2 Weeks
Pallet tie/high	6/10

Ingredients: ENRICHED WHEAT FLOUR (bleached wheat flour, malted barley flour, niacin, reduced iron, potassium bromate, thiamine mononitrate, riboflavin, folic acid), SHORTENING (palm oil), SUGAR, EGGS, APRICOT JAM (sugar, water, apricot puree, sugar syrup, high fructose corn syrup, citric acid, pectin), CHOCOLATE COATING (sugar, vegetable shortening (blend of partially hydrogenated soybean & coconut oils, hydrogenated cottonseed and/or palm oils, cocoa (alkali processed), sorbitan monosterate, natural & artificial flavors, polysorbate 60, salt.) YELLOW SPRINKLES (corn starch, soya lecithin, gum arabic), BAKING POWDER, SALT, FLAVORS, (F D & C YELLOW #5 & #6)

Lot Code Explanation (Julian Date): The first number of the Julian Date represents the last number of the year. The next three numbers represent the day of manufacture. I.e.: **5101** means it was manufactured in **2015** on the **101st** day.

Allergens: Wheat, eggs, soy.

Kosher Status : No

Country of Origin: United States of America

Allergen warning: This product was made in a facility that may also use common food allergens including milk, peanuts, tree nuts, eggs and soybean.

GMO Status: Based on information provided to us by our vendors, we cannot guarantee that this item is genetically modified organism (GMO) free.

MSDS: All items manufactured by La Rosa Bakery Inc. contains ingredients which are on the GRAS (generally recognized as safe) list. These food items do not require a MSDS (material safety data sheet) and are made in compliance with the United States of America Food, Drug and Cosmetic Act.

Certificate of Manufacture: La Rosa Bakery, Inc. certifies that all products are prepared, processed and packaged in a facility inspected by the Food and Drug Administration as well as a Third Party Auditor and applicable state or local health agencies in the United States of America, using only ingredients and packaging that are approved for food use.

Nutrition Facts	
Serving Size 2 oz (57g)	
Servings per Container	
Amount per Serving	
Calories 200	Calories from Fat 70
% Daily Value*	
Total Fat 8g	13 %
Saturated Fat 2.5g	14 %
Trans Fat 0g	
Cholesterol 0mg	0 %
Sodium 50mg	2 %
Total Carbohydrate 31g	10 %
Dietary Fiber 0g	0 %
Sugars 12g	
Protein 2g	
Vitamin A 0%	Vitamin C 2%
Calcium 2%	Iron 4%
* Percent Daily Values are based on a 2,000 calorie diet. Your daily values may be higher or lower depending on your calorie needs.	
	Calories 2,000 2,500
Total Fat	Less than 65g 80g
Sat Fat	Less than 20g 25g
Cholesterol	Less than 300mg 300mg
Sodium	Less than 2,400mg 2,400mg
Total Carbohydrate	300g 375g
Dietary Fiber	25g 30g
Calories per gram	
Fat 9 • Carbohydrates 4 • Protein 4	

Case UPC



Case Label

APRICOT SANDWICH

INGREDIENTS: ENRICHED WHEAT FLOUR (bleached wheat flour, malted barley flour, niacin, reduced iron, potassium bromate, thiamine mononitrate, riboflavin, folic acid), SHORTENING (palm oil), SUGAR, EGGS, APRICOT JAM (sugar, water, apricot puree, sugar syrup, high fructose corn syrup, citric acid, pectin), CHOCOLATE COATING (sugar, vegetable shortening (blend of partially hydrogenated soybean & coconut oils, hydrogenated cottonseed and/or palm oils, cocoa (alkali processed), sorbitan monosterate, natural & artificial flavors, polysorbate 60, salt.) YELLOW SPRINKLES (corn starch, soya lecithin, gum arabic), BAKING POWDER, SALT, FLAVORS, (F D & C YELLOW #5 & #6)

Contains: Wheat, eggs, soy.

NET WT. 10 LBS. REF # 1710

MANUFACTURED BY: LA ROSA BAKERY, INC.
SHREWSBURY, NJ 07702



Product Specification

Assorted Butter Cookies Item 1840



Net Case Weight	9 lbs.
Gross Case Wt.	10.5 lbs
Inner Case Pack	12/12 oz. Trays
Shelf Life	90 Days
Case Dimensions	17.75 X 15.5 X 5.875
Case Cube	0.83
Storage	Dry
Lead Time	2 Weeks
Pallet tie/high	6/10

Ingredients: :ENRICHED WHEAT FLOUR(bleached wheat flour, malted barley flour, niacin, reduced iron, potassium bromate, thiamine mononitrate, riboflavin, folic acid), SUGAR, SHORTENING(palm oil mono and diglycerides, polysorbate 60), EGGS, CHOCOLATE FUDGE(sugar, fudge base(vegetable shortening, part hydrated (soy, cottonseed and/or canola oils) cocoa (processed with alkali), corn syrup solids, soy oil), SHORTENING(palm oil, mono and diglycerides, polysorbate 60), water) BUTTERCREME (powdered sugar, SHORTENING (palm oil, mono and diglycerides, polysorbate 60), water, artificial flavors), CHOCOLATE COATING(partially hydrogenated soy bean and cottonseed oil, palm oil with lecithin), alk cocoa powder, soybean oil, sorbitan monostearate, polysorbate 60, salt, nat & art flavors), RASPBERRY JAM(raspberries, sugar, corn syrup, pectin, citric acid, sodium citrate), APRICOT JAM(sugar, water, apricot puree, sugar syrup, high fructose corn syrup, citric acid, pectin), ORANGE PINEAPPLE JAM(sugar, corn syrup, pineapple, high fructose corn syrup, orange peel, water, citric acid, pectin, locust bean gum, potassium sorbate as a preservative, sodium citrate, artificial flavor F D & C Yellow #6, caramel color, CHERRIES, BAKING POWDER, MULTI COLOR SPRINKLES (corn starch, soya lecithin, gum arabic), (F D & C YELLOW #3 #5 & #6 , F D & C RED #40 RED #3(ERYTHROSINE), BLUE #1)

Lot Code Explanation (Julian Date): The first number of the Julian Date represents the last number of the year. The next three numbers represent the day of manufacture. I.e.: **5101** means it was manufactured in **2015** on the **101**st day.

Kosher Status : No

Country of Origin: United States of America

Allergen warning: This product was made in a facility that may also use common food allergens including milk, peanuts, tree nuts, eggs and soybean.

GMO Status: Based on information provided to us by our vendors, we cannot guarantee that this item is genetically modified organism (GMO) free.

MSDS: All items manufactured by La Rosa Bakery Inc. contains ingredients which are on the GRAS (generally recognized as safe) list. These food items do not require a MSDS (material safety data sheet) and are made in compliance with the United States of America Food, Drug and Cosmetic Act.

Certificate of Manufacture: La Rosa Bakery, Inc. certifies that all products are prepared, processed and packaged in a facility inspected by the Food and Drug Administration as well as a Third Party Auditor and applicable state or local health agencies in the United States of America, using only ingredients and packaging that are approved for food use.

Nutrition Facts	
Serving Size 2 oz (57g)	
Servings per Container	
Amount per Serving	
Calories 270	Calories from Fat 130
% Daily Value*	
Total Fat 15g	23 %
Saturated Fat 4g	21 %
Trans Fat 0g	
Cholesterol 5mg	1 %
Sodium 45mg	2 %
Total Carbohydrate 30g	10 %
Dietary Fiber 1g	4 %
Sugars 8g	
Protein 3g	
Vitamin A 0%	Vitamin C 0%
Calcium 4%	Iron 8%
* Percent Daily Values are based on a 2,000 calorie diet. Your daily values may be higher or lower depending on your calorie needs.	
	Calories 2,000 2,500
Total Fat	Less than 65g 80g
Sat Fat	Less than 20g 25g
Cholesterol	Less than 300mg 300mg
Sodium	Less than 2,400mg 2,400mg
Total Carbohydrate	300g 375g
Dietary Fiber	25g 30g
Calories per gram	
Fat 9 • Carbohydrates 4 • Protein 4	

Case UPC



6 18539 01840 5

Case Label

ASSORTED COOKIES	
INGREDIENTS: ENRICHED WHEAT FLOUR(bleached wheat flour, malted barley flour, niacin, reduced iron, potassium bromate, thiamine mononitrate, riboflavin, folic acid), SUGAR, SHORTENING(palm oil mono and diglycerides, polysorbate 60), EGGS, CHOCOLATE FUDGE (sugar, fudge base(vegetable shortening, part hydrated (soy, cottonseed and/or canola oils) cocoa (processed with alkali), corn syrup solids, soy oil), SHORTENING(palm oil, mono and diglycerides, polysorbate 60), water) BUTTERCREME (powdered sugar, SHORTENING (palm oil, mono and diglycerides, polysorbate 60), water, artificial flavors), CHOCOLATE COATING(partially hydrogenated soy bean and cottonseed oil, palm oil with lecithin), alk cocoa powder, soybean oil, sorbitan monostearate, polysorbate 60, salt, nat & art flavors), RASPBERRY JAM(raspberries, sugar, corn syrup, pectin, citric acid, sodium citrate), APRICOT JAM(sugar, water, apricot puree, sugar syrup, high fructose corn syrup, citric acid, pectin), ORANGE PINEAPPLE JAM(sugar, corn syrup, pineapple, high fructose corn syrup, orange peel, water, citric acid, pectin, locust bean gum, potassium sorbate as a preservative, sodium citrate, artificial flavor F D & C Yellow #6, caramel color, CHERRIES, BAKING POWDER, MULTI COLOR SPRINKLES (corn starch, soya lecithin, gum arabic), (F D & C YELLOW #3 #5 & #6 , F D & C RED #40 RED #3(ERYTHROSINE), BLUE #1)	
12-12 OZ TRAYS - NET WT 9 LBS - REF # 1840	
MANUFACTURED BY: LA ROSA BAKERY, INC. SHREWSBURY, NJ 07702	



Product Specification

Assorted Butter Cookies, Item 1800



Net Case Weight	10 lbs.
Gross Case Wt.	11 lbs.
Inner Case Pack	2/5 lb. trays
Shelf Life	10 -12 weeks
Case Dimensions	17.75 X 15.5 X 5.1875
Case Cube	0.83
Storage	Cool
Lead Time	2 Weeks
Pallet tie/high	6/10

Ingredients: ENRICHED WHEAT FLOUR (bleached wheat flour, malted barley flour, niacin, reduced iron, potassium bromate, thiamine mononitrate, riboflavin, folic acid), SUGAR, SHORTENING (palm oil) EGGS, CHOCOLATE FUDGE (sugar, fudge base (vegetable shortening, part hydrated (soy, cottonseed and/or canola oils) cocoa (processed with alkali), corn syrup solids, soy oil), SHORTENING (palm oil, mono and diglycerides, polysorbate 60), water) BUTTERCREME (powdered sugar, SHORTENING (palm oil, mono and diglycerides, polysorbate 60), water, artificial flavors), CHOCOLATE COATING (partially hydrogenated soy bean and cottonseed oil, palm oil with lecithin), alk cocoa powder, soybean oil, sorbitan monoester, polysorbate 60, salt, nat & art flavors), RASPBERRY JAM (raspberries, sugar, corn syrup, pectin, citric acid and sodium citrate), APRICOT JAM (sugar, water, apricot puree, sugar syrup, high fructose corn syrup, citric acid, pectin), ORANGE PINEAPPLE JAM (sugar, corn syrup, pineapple, high fructose corn syrup, orange peel, water, citric acid, pectin, locust bean gum, potassium sorbate as a preservative, sodium citrate, artificial flavor F D & C Yellow #6, caramel color, CHERRIES, BAKING POWDER, MULTI COLOR SPRINKLES (corn starch, soya lecithin, gum arabic), (F D & C YELLOW #3 #5 & #6 , F D & C RED #40 RED #3(ERYTHROSINE), BLUE #1)

Lot Code Explanation (Julian Date): The first number of the Julian Date represents the last number of the year. The next three numbers represent the day of manufacture. I.e.: **5101** means it was manufactured in **2015** on the **101st** day.

Allergens: Wheat, eggs, soy.

Kosher Status : No

Country of Origin: United States of America

Allergen warning: This product was made in a facility that may also use common food allergens including milk, peanuts, tree nuts, eggs and soybean.

GMO Status: Based on information provided to us by our vendors, we cannot guarantee that this item is genetically modified organism (GMO) free.

MSDS: All items manufactured by La Rosa Bakery Inc. contains ingredients which are on the GRAS (generally recognized as safe) list. These food items do not require a MSDS (material safety data sheet) and are made in compliance with the United States of America Food, Drug and Cosmetic Act.

Certificate of Manufacture: La Rosa Bakery, Inc. certifies that all products are prepared, processed and packaged in a facility inspected by the Food and Drug Administration as well as a Third Party Auditor and applicable state or local health agencies in the United States of America, using only ingredients and packaging that are approved for food use.

Nutrition Facts	
Serving Size 2 oz (57g)	
Servings per Container	
Amount per Serving	
Calories 270	Calories from Fat 130
% Daily Value*	
Total Fat 15g	23 %
Saturated Fat 4g	21 %
<i>Trans</i> Fat 0g	
Cholesterol 5mg	1 %
Sodium 45mg	2 %
Total Carbohydrate 30g	10 %
Dietary Fiber 1g	4 %
Sugars 8g	
Protein 3g	
Vitamin A 0 %	Vitamin C 0 %
Calcium 4 %	Iron 8 %
* Percent Daily Values are based on a 2,000 calorie diet. Your daily values may be higher or lower depending on your calorie needs.	
	Calories 2,000 2,500
Total Fat	Less than 65g 80g
Sat Fat	Less than 20g 25g
Cholesterol	Less than 300mg 300mg
Sodium	Less than 2,400mg 2,400mg
Total Carbohydrate	300g 375g
Dietary Fiber	25g 30g
Calories per gram	
Fat 9	Carbohydrates 4 Protein 4

Case UPC



Case Label

ASSORTED BUTTER COOKIES	
<small>INGREDIENTS: ENRICHED WHEAT FLOUR (bleached wheat flour, malted barley flour, niacin, reduced iron, potassium bromate, thiamine mononitrate, riboflavin, folic acid), SUGAR, SHORTENING (palm oil mono and diglycerides, polysorbate 60) , EGGS, CHOCOLATE FUDGE (sugar, fudge base (vegetable shortening, part hydrated (soy, cottonseed and/or canola oils) cocoa (processed with alkali), corn syrup solids, soy oil), SHORTENING (palm oil, mono and diglycerides, polysorbate 60), water) BUTTERCREME (powdered sugar, SHORTENING (palm oil, mono and diglycerides, polysorbate 60), water, artificial flavors), CHOCOLATE COATING (partially hydrogenated soy bean and cottonseed oil, palm oil with lecithin), alk cocoa powder, soybean oil, sorbitan monoester, polysorbate 60, salt, nat & art flavors), RASPBERRY JAM (raspberries, sugar, corn syrup, pectin, citric acid and sodium citrate), APRICOT JAM (sugar, water, apricot puree, sugar syrup, high fructose corn syrup, citric acid, pectin), ORANGE PINEAPPLE JAM (sugar, corn syrup, pineapple, high fructose corn syrup, orange peel, water, citric acid, pectin, locust bean gum, potassium sorbate as a preservative, sodium citrate, artificial flavor F D & C Yellow #6, caramel color, CHERRIES, BAKING POWDER, MULTI COLOR SPRINKLES (corn starch, soya lecithin, gum arabic), (F D & C YELLOW #3 #5 & #6 , F D & C RED #40 RED #3(ERYTHROSINE), BLUE #1)</small>	
<small>Contains: Wheat, eggs, soy.</small>	
NET WT. 10 LBS. REF # 1800 MANUFACTURED BY: LA ROSA BAKERY, INC. SHREWSBURY, NJ 07702	



Product Specification

Assorted Christmas Cookies, Item 1951



Ingredients: UN-ENRICHED WHEAT FLOUR, SHORTENING (palm oil), SUGAR, VANILLA COATING (liquid sugar, corn syrup, sugar, partially hydrogenated soybean and cottonseed oil, water)EGGS, SALT, FLAVORS, (FD & C YELLOW #5, FD & C BLUE #1, FD & C RED #3).

Net Case Weight	10 lbs.
Gross Case Wt.	11 lbs.
Inner Case Pack	2/5 lbs. trays
Shelf Life	10-12 weeks
Case Dimensions	17.75 x 15.5 x 5.1875
Case Cube	0.83
Storage	Cool
Lead Time	2 weeks
Pallet tie/high	6/10

Lot Code Explanation (Julian Date): The first number of the Julian Date represents the last number of the year. The next three numbers represent the day of manufacture. I.e.: **5101** means it was manufactured in 20**15** on the **101**st day.

Allergens: Wheat, eggs, soy.

Kosher Status : No

Country of Origin: United States of America

Allergen warning: This product was made in a facility that may also use common food allergens including milk, peanuts, tree nuts, eggs and soybean.

GMO Status: Based on information provided to us by our vendors, we cannot guarantee that this item is genetically modified organism (GMO) free.

MSDS: All items manufactured by La Rosa Bakery Inc. contains ingredients which are on the GRAS (generally recognized as safe) list. These food items do not require a MSDS (material safety data sheet) and are made in compliance with the United States of America Food, Drug and Cosmetic Act.

Certificate of Manufacture: La Rosa Bakery, Inc. certifies that all products are prepared, processed and packaged in a facility inspected by the Food and Drug Administration as well as a Third Party Auditor and applicable state or local health agencies in the United States of America, using only ingredients and packaging that are approved for food use.

Nutrition Facts

Serving Size 2 oz (57g)
Servings per Container

Amount per Serving

Calories 280 Calories from Fat 170

% Daily Value*

Total Fat 19g **29%**

Saturated Fat 4.5g **23%**

Trans Fat 1g

Cholesterol 0mg **0%**

Sodium 60mg **3%**

Total Carbohydrate 25g **8%**

Dietary Fiber 1g **2%**

Sugars 10g

Protein 3g

Vitamin A 0% • Vitamin C 0%

Calcium 2% • Iron 6%

* Percent Daily Values are based on a 2,000 calorie diet. Your daily values may be higher or lower depending on your calorie needs.

	Calories	2,000	2,500
--	----------	-------	-------

Total Fat	Less than	65g	80g
Sat Fat	Less than	20g	25g
Cholesterol	Less than	300mg	300mg
Sodium	Less than	2,400mg	2,400mg
Total Carbohydrate		300g	375g
Dietary Fiber		25g	30g

Calories per gram

Fat 9 • Carbohydrates 4 • Protein 4

Case UPC



Case Label

ASSORTED CHRISTMAS COOKIES

INGREDIENTS: UN-ENRICHED WHEAT FLOUR, SHORTENING (palm oil), SUGAR, VANILLA COATING (liquid sugar, corn syrup, sugar, partially hydrogenated soybean and cottonseed oil, water)EGGS, SALT, FLAVORS, (FD & C YELLOW #5, FD & C BLUE #1, FD & C RED #3).

Contains: W heats, soy, eggs.

NET WT 10.5 LBS REF# 1951

MANUFACTURED BY: LA ROSA BAKERY, INC.
SHREWSBURY, NJ 07702



Product Specification

Assorted Gourmet Butter Cookie Tray Item 1832



Net Case Weight	12 lbs.
Gross Case Wt.	13 lbs.
Inner Case Pack	12/1 lb. Trays
Shelf Life	10-12 Weeks
Case Dimensions	17.75 X 15.5 X 5.19
Case Cube	0.83
Storage	Cool
Lead Time	2 Weeks
Pallet tie/high	6/10

Ingredients: INGREDIENTS:ENRICHED WHEAT FLOUR(bleached wheat flour, malted barley flour, niacin, reduced iron, potassium bromate, thiamine mononitrate, riboflavin, folic acid),SUGAR, SHORTENING (palm oil mono and diglycerides, polysorbate 60), EGGS, CHOCOLATE FUDGE (sugar, fudge base (vegetable shortening, part hydrogenated (soy, cottonseed and/or canola oils) cocoa (processed with alkali), corn syrup solids, soy oil), vegetable shortening, part hydrogenated (palm and soy bean oils), water)BUTTER CREME(powdered sugar, vegetable shortening, part hydrogenated palm and soy bean oils, water, artificial flavors),CHOCOLATE COATING(sugar, vegetable shortening (blend of partially hydrogenated soybean & coconut oils, hydrogenated cottonseed and/or palm oils. Cocoa (alkali processed), sorbitan monostearate, natural & artificial flavors, polysorbate 60, salt.)RASPBERRY JAM(raspberries, sugar, corn syrup, pectin, citric acid and sodium citrate), APRICOT JAM(sugar, water, apricot puree, sugar syrup, high fructose corn syrup, citric acid, pectin),ORANGE PINEAPPLE JAM(sugar, corn syrup, pineapple, high fructose corn syrup, orange peel, water, citric acid, pectin, locust bean gum, potassium sorbate as a preservative, sodium citrate, artificial flavor F D & C Yellow #6, caramel color, CHERRIES, WALNUTS, BAKING POWDER, MULTI COLOR SPRINKLES(corn starch, soya lecithin, gum arabic), (F D & C YELLOW #3 #5 & #6 , F D & C RED #40 RED #3(ERYTHROSINE,BLUE #1)

Lot Code Explanation (Julian Date): The first number of the Julian Date represents the year. The last three numbers represent the day of manufacture.

Allergens: Wheat, eggs, milk, soy.

Kosher Status : No

Country of Origin: United States of America

Allergen warning: This product was made in a facility that may also use common food allergens including milk, peanuts, tree nuts, eggs and soybean.

GMO Status: Based on information provided to us by our vendors, we cannot guarantee that this item is genetically modified organism (GMO) free.

MSDS: All items manufactured by La Rosa Bakery Inc. contains ingredients which are on the GRAS (generally recognized as safe) list. These food items do not require a MSDS (material safety data sheet) and are made in compliance with the United States of America Food, Drug and Cosmetic Act.

Certificate of Manufacture: La Rosa Bakery, Inc. certifies that all products are prepared, processed and packaged in a facility inspected by the Food and Drug Administration as well as a Third Party Auditor and applicable state or local health agencies in the United States of America, using only ingredients and packaging that are approved for food use.

Nutrition Facts	
Serving Size 2 oz (57g)	
Servings per Container 6	
Amount per Serving	
Calories 270	Calories from Fat 130
% Daily Value*	
Total Fat 15g	23 %
Saturated Fat 4g	21 %
Trans Fat 0g	
Cholesterol 5mg	1 %
Sodium 45mg	2 %
Total Carbohydrate 30g	10 %
Dietary Fiber 1g	4 %
Sugars 8g	
Protein 3g	
Vitamin A 0 %	Vitamin C 0 %
Calcium 4 %	Iron 8 %
* Percent Daily Values are based on a 2,000 calorie diet. Your daily values may be higher or lower depending on your calorie needs.	
	Calories 2,000 2,500
Total Fat	Less than 65g 80g
Sat Fat	Less than 20g 25g
Cholesterol	Less than 300mg 300mg
Sodium	Less than 2,400mg 2,400mg
Total Carbohydrate	300g 375g
Dietary Fiber	25g 30g
Calories per gram	
Fat 9	Carbohydrates 4 Protein 4

Case UPC



Case Label

ASSORTED COOKIES	
INGREDIENTS:ENRICHED WHEAT FLOUR(bleached wheat flour, malted barley flour, niacin, reduced iron, potassium bromate, thiamine mononitrate, riboflavin, folic acid),SUGAR, SHORTENING (palm oil mono and diglycerides, polysorbate 60), EGGS, CHOCOLATE FUDGE (sugar, fudge base (vegetable shortening, part hydrogenated (soy, cottonseed and/or canola oils) cocoa (processed with alkali), corn syrup solids, soy oil), vegetable shortening, part hydrogenated (palm and soy bean oils), water) BUTTER CREME(powdered sugar, vegetable shortening, part hydrogenated palm and soy bean oils, water, artificial flavors),CHOCOLATE COATING(sugar, vegetable shortening (blend of partially hydrogenated soybean & coconut oils, hydrogenated cottonseed and/or palm oils. Cocoa (alkali processed), sorbitan monostearate, natural & artificial flavors, polysorbate 60, salt.)RASPBERRY JAM (raspberries, sugar, corn syrup, pectin, citric acid and sodium citrate), APRICOT JAM(sugar, water, apricot puree, sugar syrup, high fructose corn syrup, citric acid, pectin),ORANGE PINEAPPLE JAM (sugar, corn syrup, pineapple, high fructose corn syrup, orange peel, water, citric acid, pectin, locust bean gum, potassium sorbate as a preservative, sodium citrate, artificial flavor F D & C Yellow #6, caramel color, CHERRIES, WALNUTS, BAKING POWDER, MULTI COLOR SPRINKLES(corn starch, soya lecithin, gum arabic), (F D & C YELLOW #3 #5 & #6 , F D & C RED #40 RED #3 (ERYTHROSINE,BLUE #1)	
Manufactured By: La Rosa Bakery, Inc. Shrewsbury, NJ 07702 - 12 - 1 LB Trays - Net Wt 12 LBS.	



Product Specification

Assorted Wreath Cookies, Item 1952



Net Case Weight	10 lbs.
Gross Case Wt.	11 lbs.
Inner Case Pack	2/5 lbs. trays
Shelf Life	10-12 weeks
Case Dimensions	17.75 x 15.5 x 5.1875
Case Cube	0.83
Storage	Cool
Lead Time	2 weeks
Pallet tie/high	6/10

Ingredients: ENRICHED WHEAT FLOUR (bleached wheat flour, malted barley flour, niacin, reduced iron, potassium bromate, thiamine mononitrate, riboflavin, folic acid), SHORTENING (palm oil), SUGAR, EGGS, (FD & C YELLOW #5 & FD & C BLUE #1, FD & C RED #3).

Lot Code Explanation (Julian Date): The first number of the Julian Date represents the last number of the year. The next three numbers represent the day of manufacture. I.e.: **5101** means it was manufactured in **2015** on the **101**st day.

Allergens: Wheat, eggs.

Kosher Status : No

Country of Origin: United States of America

Allergen warning: This product was made in a facility that may also use common food allergens including milk, peanuts, tree nuts, eggs and soybean.

GMO Status: Based on information provided to us by our vendors, we cannot guarantee that this item is genetically modified organism (GMO) free.

MSDS: All items manufactured by La Rosa Bakery Inc. contains ingredients which are on the GRAS (generally recognized as safe) list. These food items do not require a MSDS (material safety data sheet) and are made in compliance with the United States of America Food, Drug and Cosmetic Act.

Certificate of Manufacture: La Rosa Bakery, Inc. certifies that all products are prepared, processed and packaged in a facility inspected by the Food and Drug Administration as well as a Third Party Auditor and applicable state or local health agencies in the United States of America, using only ingredients and packaging that are approved for food use.

Nutrition Facts	
Serving Size 2.79/199 oz (68g)	
Servings per Container	
Amount per Serving	
Calories 300	Calories from Fat 160
% Daily Value*	
Total Fat 18g	27%
Saturated Fat 4.5g	22%
<i>Trans</i> Fat 0g	
Cholesterol 0mg	0%
Sodium 90mg	4%
Total Carbohydrate 31g	10%
Dietary Fiber 1g	3%
Sugars 12g	
Protein 4g	
Vitamin A 0%	Vitamin C 0%
Calcium 2%	Iron 6%
* Percent Daily Values are based on a 2,000 calorie diet. Your daily values may be higher or lower depending on your calorie needs.	
Calories 2,000 2,500	
Total Fat	Less than 65g 80g
Sat Fat	Less than 20g 25g
Cholesterol	Less than 300mg 300mg
Sodium	Less than 2,400mg 2,400mg
Total Carbohydrate	300g 375g
Dietary Fiber	25g 30g
Calories per gram	
Fat 9 • Carbohydrates 4 • Protein 4	

Case UPC



Case Label

ASST. WREATH COOKIES

INGREDIENTS: ENRICHED WHEAT FLOUR (bleached wheat flour, malted barley flour, niacin, reduced iron, potassium bromate, thiamine mononitrate, riboflavin, folic acid), SHORTENING (palm oil), SUGAR, EGGS, (FD & C YELLOW #5 & FD & C BLUE #1, FD & C RED #3).
Contains: Wheat, eggs.

NET WT 10. LBS REF# 1952

Manufactured By: La Rosa Bakery, Inc.
Shrewsbury, NJ 07702





Product Specification

Asst. Bell Cookie Tray, Item 1855



Ingredients: UN-ENRICHED WHEAT FLOUR, SHORTENING (palm oil), SUGAR, VANILLA COATING (liquid sugar, corn syrup, sugar, partially hydrogenated soybean and cottonseed oil, water)EGGS, SALT, FLAVORS, (FD & C YELLOW #5, FD & C BLUE #1, FD & C RED #3).

Net Case Weight	10.5 lbs.
Gross Case Wt.	13 lbs.
Inner Case Pack	12/14 oz. Trays
Shelf Life	90 Days
Case Dimensions	17.75 X 15.5 X 5.88
Case Cube	0.94
Storage	Dry
Lead Time	2 Weeks
Pallet tie/high	6/10

Lot Code Explanation (Julian Date): The first number of the Julian Date represents the year. The last three numbers represent the day of manufacture. Ie: **5101** means it was manufactured in 2015 on the **101st** day.

Allergens: Wheat, eggs, soy.

Kosher Status : No

Country of Origin: United States of America

Allergen warning: This product was made in a facility that may also use common food allergens including milk, peanuts, tree nuts, eggs and soybean.

GMO Status: Based on information provided to us by our vendors, we cannot guarantee that this item is genetically modified organism (GMO) free.

MSDS: All items manufactured by La Rosa Bakery Inc. contains ingredients which are on the GRAS (generally recognized as safe) list. These food items do not require a MSDS (material safety data sheet) and are made in compliance with the United States of America Food, Drug and Cosmetic Act.

Certificate of Manufacture: La Rosa Bakery, Inc. certifies that all products are prepared, processed and packaged in a facility inspected by the Food and Drug Administration as well as a Third Party Auditor and applicable state or local health agencies in the United States of America, using only ingredients and packaging that are approved for food use.

Nutrition Facts

Serving Size 2 26/97 oz (64g)
Servings per Container 7

Amount per Serving

Calories 300 Calories from Fat 150

% Daily Value*

Total Fat 17g **26%**

Saturated Fat 4g **21%**

Trans Fat 0g

Cholesterol 0mg **0%**

Sodium 100mg **4%**

Total Carbohydrate 34g **11%**

Dietary Fiber 1g **3%**

Sugars 13g

Protein 3g

Vitamin A 0% • Vitamin C 0%

Calcium 0% • Iron 2%

* Percent Daily Values are based on a 2,000 calorie diet. Your daily values may be higher or lower depending on your calorie needs.

Calories	2,000	2,500
----------	-------	-------

Total Fat	Less than	65g	80g
-----------	-----------	-----	-----

Sat Fat	Less than	20g	25g
---------	-----------	-----	-----

Cholesterol	Less than	300mg	300mg
-------------	-----------	-------	-------

Sodium	Less than	2,400mg	2,400mg
--------	-----------	---------	---------

Total Carbohydrate		300g	375g
--------------------	--	------	------

Dietary Fiber		25g	30g
---------------	--	-----	-----

Calories per gram

Fat 9 • Carbohydrates 4 • Protein 4

Case UPC



Case Label


ASSORTED BELL COOKIES

INGREDIENTS: UN-ENRICHED WHEAT FLOUR, SHORTENING (palm oil), SUGAR, VANILLA COATING (liquid sugar, corn syrup, sugar, partially hydrogenated soybean and cottonseed oil, water)EGGS, SALT, FLAVORS, (FD & C YELLOW #5, FD & C BLUE #1, FD & C RED #3).

Contains: Wheat, eggs, soy.

12-14 OZ TRAYS - NET WT 10.5 LBS REF# 1855

Manufactured By: La Rosa Bakery, Inc.
Shrewsbury, NJ 07702





Product Specification

Asst. Bell Cookies, Item 1955



Net Case Weight	10 lbs.
Gross Case Wt.	11 lbs.
Inner Case Pack	2/5 lbs. trays
Shelf Life	10-12 weeks
Case Dimensions	17.75 x 15.5 x 5.1875
Case Cube	0.83
Storage	Cool
Lead Time	2 weeks
Pallet tie/high	6/10

Ingredients: UN-ENRICHED WHEAT FLOUR, SHORTENING (palm oil), SUGAR, VANILLA COATING (liquid sugar, corn syrup, sugar, partially hydrogenated soybean and cottonseed oil, water)EGGS, SALT, FLAVORS, (FD & C YELLOW #5, FD & C BLUE #1, FD & C RED #3).

Lot Code Explanation (Julian Date): The first number of the Julian Date represents the year. The last three numbers represent the day of manufacture. Ie: **5101** means it was manufactured in 2015 on the **101st** day.

Allergens: Wheat, eggs, soy.

Kosher Status : No

Country of Origin: United States of America

Allergen warning: This product was made in a facility that may also use common food allergens including milk, peanuts, tree nuts, eggs and soybean.

GMO Status: Based on information provided to us by our vendors, we cannot guarantee that this item is genetically modified organism (GMO) free.

MSDS: All items manufactured by La Rosa Bakery Inc. contains ingredients which are on the GRAS (generally recognized as safe) list. These food items do not require a MSDS (material safety data sheet) and are made in compliance with the United States of America Food, Drug and Cosmetic Act.

Certificate of Manufacture: La Rosa Bakery, Inc. certifies that all products are prepared, processed and packaged in a facility inspected by the Food and Drug Administration as well as a Third Party Auditor and applicable state or local health agencies in the United States of America, using only ingredients and packaging that are approved for food use.

Nutrition Facts	
Serving Size 2 26/97 oz (64g)	
Servings per Containe	
Amount per Serving	
Calories 300	Calories from Fat 150
% Daily Value*	
Total Fat 17g	26 %
Saturated Fat 4g	21 %
Trans Fat 0g	
Cholesterol 0mg	0 %
Sodium 100mg	4 %
Total Carbohydrate 34g	11 %
Dietary Fiber 1g	3 %
Sugars 13g	
Protein 3g	
Vitamin A 0 %	Vitamin C 0 %
Calcium 0 %	Iron 2 %
* Percent Daily Values are based on a 2,000 calorie diet. Your daily values may be higher or lower depending on your calorie needs.	
	Calories 2,000 2,500
Total Fat	Less than 65g 80g
Sat Fat	Less than 20g 25g
Cholesterol	Less than 300mg 300mg
Sodium	Less than 2,400mg 2,400mg
Total Carbohydrate	300g 375g
Dietary Fiber	25g 30g
Calories per gram	
Fat 9 • Carbohydrates 4 • Protein 4	

Case UPC



Case Label

ASSORTED BELL COOKIES

INGREDIENTS: UN-ENRICHED WHEAT FLOUR, SHORTENING (palm oil), SUGAR, VANILLA COATING (liquid sugar, corn syrup, sugar, partially hydrogenated soybean and cottonseed oil, water)EGGS, SALT, FLAVORS, (FD & C YELLOW #5, FD & C BLUE #1, FD & C RED #3).

Contains: Wheat, eggs, soy.

NET WT 10 LBS REF# 1955

Manufactured By: La Rosa Bakery, Inc.
Shrewsbury, NJ 07702



Product Specification

Asst. Christmas Cookie Tray, Item 1851



Net Case Weight	10.5 lbs.
Gross Case Wt.	13 lbs.
Inner Case Pack	12/14 oz. Trays
Shelf Life	90 Days
Case Dimensions	17.75 X 15.5 X 5.88
Case Cube	0.94
Storage	Dry
Lead Time	2 Weeks
Pallet tie/high	6/10

Ingredients: UN-ENRICHED WHEAT FLOUR, SHORTENING (palm oil), SUGAR, VANILLA COATING (liquid sugar, corn syrup, sugar, partially hydrogenated soybean and cottonseed oil, water)EGGS, SALT, FLAVORS, (FD & C YELLOW #5, FD & C BLUE #1, FD & C RED #3).

Lot Code Explanation (Julian Date): The first number of the Julian Date represents the year. The last three numbers represent the day of manufacture. Ie: **5101** means it was manufactured in 2015 on the **101st** day.

Allergens: Wheat, eggs, soy.

Kosher Status : No

Country of Origin: United States of America

Allergen warning: This product was made in a facility that may also use common food allergens including milk, peanuts, tree nuts, eggs and soybean.

GMO Status: Based on information provided to us by our vendors, we cannot guarantee that this item is genetically modified organism (GMO) free.

MSDS: All items manufactured by La Rosa Bakery Inc. contains ingredients which are on the GRAS (generally recognized as safe) list. These food items do not require a MSDS (material safety data sheet) and are made in compliance with the United States of America Food, Drug and Cosmetic Act.

Certificate of Manufacture: La Rosa Bakery, Inc. certifies that all products are prepared, processed and packaged in a facility inspected by the Food and Drug Administration as well as a Third Party Auditor and applicable state or local health agencies in the United States of America, using only ingredients and packaging that are approved for food use.

Nutrition Facts	
Serving Size 2 oz (57g)	
Servings per Container 7	
Amount per Serving	
Calories 280	Calories from Fat 170
% Daily Value*	
Total Fat 19g	29 %
Saturated Fat 4.5g	23 %
Trans Fat 1g	
Cholesterol 0mg	0 %
Sodium 60mg	3 %
Total Carbohydrate 25g	8 %
Dietary Fiber 1g	2 %
Sugars 10g	
Protein 3g	
Vitamin A 0%	Vitamin C 0%
Calcium 2%	Iron 6%
* Percent Daily Values are based on a 2,000 calorie diet. Your daily values may be higher or lower depending on your calorie needs.	
	Calories 2,000 2,500
Total Fat	Less than 65g 80g
Sat Fat	Less than 20g 25g
Cholesterol	Less than 300mg 300mg
Sodium	Less than 2,400mg 2,400mg
Total Carbohydrate	300g 375g
Dietary Fiber	25g 30g
Calories per gram	
Fat 9 • Carbohydrates 4 • Protein 4	

Case UPC



Case Label

ASSORTED CHRISTMAS COOKIES	
INGREDIENTS: UN-ENRICHED WHEAT FLOUR, SHORTENING (palm oil), SUGAR, VANILLA COATING (liquid sugar, corn syrup, sugar, partially hydrogenated soybean and cottonseed oil, water)EGGS, SALT, FLAVORS, (FD & C YELLOW #5, FD & C BLUE #1, FD & C RED #3).	
Contains: Wheats, soy, eggs.	
12-14 OZ TRAYS	
NET WT 10.5 LBS REF# 1851	
MANUFACTURED BY: LA ROSA BAKERY, INC. SHREWSBURY, NJ 07702	



Product Specification

Asst. Wreath Cookie Tray, Item 1852



Net Case Weight	10.5 lbs.
Gross Case Wt.	13 lbs.
Inner Case Pack	12/14 oz. Trays
Shelf Life	90 Days
Case Dimensions	17.75 X 15.5 X 5.88
Case Cube	0.94
Storage	Dry
Lead Time	2 Weeks
Pallet tie/high	6/10

Ingredients: ENRICHED WHEAT FLOUR (bleached wheat flour, malted barley flour, niacin, reduced iron, potassium bromate, thiamine mononitrate, riboflavin, folic acid), SHORTENING (palm oil), SUGAR, EGGS, (FD & C YELLOW #5 & FD & C BLUE #1, FD & C RED #3).

Lot Code Explanation (Julian Date): The first number of the Julian Date represents the year. The last three numbers represent the day of manufacture. I.e: **5101** means it was manufactured in **2015** on the **101st** day.

Allergens: Wheat, eggs.

Kosher Status : No

Country of Origin: United States of America

Allergen warning: This product was made in a facility that may also use common food allergens including milk, peanuts, tree nuts, eggs and soybean.

GMO Status: Based on information provided to us by our vendors, we cannot guarantee that this item is genetically modified organism (GMO) free.

MSDS: All items manufactured by La Rosa Bakery Inc. contains ingredients which are on the GRAS (generally recognized as safe) list. These food items do not require a MSDS (material safety data sheet) and are made in compliance with the United States of America Food, Drug and Cosmetic Act.

Certificate of Manufacture: La Rosa Bakery, Inc. certifies that all products are prepared, processed and packaged in a facility inspected by the Food and Drug Administration as well as a Third Party Auditor and applicable state or local health agencies in the United States of America, using only ingredients and packaging that are approved for food use.

Nutrition Facts	
Serving Size 2 79/199 oz (68g)	
Servings per Container 7	
Amount per Serving	
Calories 300	Calories from Fat 160
% Daily Value*	
Total Fat 18g	27 %
Saturated Fat 4.5g	22 %
<i>Trans</i> Fat 0g	
Cholesterol 0mg	0 %
Sodium 90mg	4 %
Total Carbohydrate 31g	10 %
Dietary Fiber 1g	3 %
Sugars 12g	
Protein 4g	
Vitamin A 0 %	Vitamin C 0 %
Calcium 2 %	Iron 6 %
* Percent Daily Values are based on a 2,000 calorie diet. Your daily values may be higher or lower depending on your calorie needs.	
	Calories 2,000 2,500
Total Fat	Less than 65g 80g
Sat Fat	Less than 20g 25g
Cholesterol	Less than 300mg 300mg
Sodium	Less than 2,400mg 2,400mg
Total Carbohydrate	300g 375g
Dietary Fiber	25g 30g
Calories per gram	
Fat 9 • Carbohydrates 4 • Protein 4	

Case UPC



Case Label

ASST WREATH COOKIES

INGREDIENTS: ENRICHED WHEAT FLOUR (bleached wheat flour, malted barley flour, niacin, reduced iron, potassium bromate, thiamine mononitrate, riboflavin, folic acid), SHORTENING (palm oil), SUGAR, EGGS, (FD & C YELLOW #5 & FD & C BLUE #1, FD & C RED #3).
 Contains: Wheat, eggs.

12-14 OZ TRAYS - NET WT 10.5 LBS REF# 1852

Manufactured By: La Rosa Bakery, Inc.
 Shrewsbury, NJ 07702



Product Specification

Chinese Fudge Top Cookie, Item 1727



Net Case Weight	10 lbs.
Gross Case Wt.	11 lbs
Inner Case Pack	2/5 lb. Trays
Shelf Life	10-12 Weeks
Case Dimensions	17.75 X 15.5 X 5.1875
Case Cube	0.83
Storage	Cool
Lead Time	2 Weeks
Pallet tie/high	6/10

Ingredients: ENRICHED WHEAT FLOUR (bleached wheat flour, malted barley flour, niacin, reduced iron, potassium bromate, thiamine mononitrate, riboflavin, folic acid), SHORTENING (palm oil), SUGAR, CHOCOLATE COATING (sugar, vegetable shortening (blend of partially hydrogenated soybean & coconut oils, hydrogenated cottonseed and/or palm oils. Cocoa (alkali processed), sorbitan monostearate, natural & artificial flavors, polysorbate 60, salt.), EGGS, ALMOND & VANILLA FLAVOR, BAKING POWDER, SALT.

Lot Code Explanation (Julian Date): The first number of the Julian Date represents the last number of the year. The next three numbers represent the day of manufacture. I.e.: **5101** means it was manufactured in **2015** on the **101**st day.

Allergens: Wheat, eggs, nuts(almonds), soy.

Kosher Status : No

Country of Origin: United States of America

Allergen warning: This product was made in a facility that may also use common food allergens including milk, peanuts, tree nuts, eggs and soybean.

GMO Status: Based on information provided to us by our vendors, we cannot guarantee that this item is genetically modified organism (GMO) free.

MSDS: All items manufactured by La Rosa Bakery Inc. contains ingredients which are on the GRAS (generally recognized as safe) list. These food items do not require a MSDS (material safety data sheet) and are made in compliance with the United States of America Food, Drug and Cosmetic Act.

Certificate of Manufacture: La Rosa Bakery, Inc. certifies that all products are prepared, processed and packaged in a facility inspected by the Food and Drug Administration as well as a Third Party Auditor and applicable state or local health agencies in the United States of America, using only ingredients and packaging that are approved for food use.

Nutrition Facts	
Serving Size 2 oz (57g)	
Servings per Container	
Amount per Serving	
Calories 300	Calories from Fat 160
% Daily Value*	
Total Fat 18g	27 %
Saturated Fat 5g	27 %
Trans Fat 0g	
Cholesterol 10mg	3 %
Sodium 70mg	3 %
Total Carbohydrate 32g	11 %
Dietary Fiber 1g	3 %
Sugars 18g	
Protein 2g	
Vitamin A 0 %	Vitamin C 0 %
Calcium 2 %	Iron 6 %
* Percent Daily Values are based on a 2,000 calorie diet. Your daily values may be higher or lower depending on your calorie needs.	
	Calories 2,000 2,500
Total Fat	Less than 65g 80g
Sat Fat	Less than 20g 25g
Cholesterol	Less than 300mg 300mg
Sodium	Less than 2,400mg 2,400mg
Total Carbohydrate	300g 375g
Dietary Fiber	25g 30g
Calories per gram	
Fat 9 • Carbohydrates 4 • Protein 4	

Case UPC



Case Label

CHINESE FUDGE TOP COOKIE	
INGREDIENTS: ENRICHED WHEAT FLOUR (bleached wheat flour, malted barley flour, niacin, reduced iron, potassium bromate, thiamine mononitrate, riboflavin, folic acid), SHORTENING (palm oil), SUGAR, CHOCOLATE COATING (sugar, vegetable shortening (blend of partially hydrogenated soybean & coconut oils, hydrogenated cottonseed and/or palm oils. Cocoa (alkali processed), sorbitan monostearate, natural & artificial flavors, polysorbate 60, salt.), EGGS, ALMOND & VANILLA FLAVOR, BAKING POWDER, SALT.	
Contains: Wheat, eggs, nuts (almonds), soy.	
NET WT 10 LBS	REF # 1727
MANUFACTURED BY: LA ROSA BAKERY, INC.	
SHREWSBURY, NJ 07702	



Product Specification

Chinese Fudge Top Tray, Item 1816



Net Case Weight	9 lbs.
Gross Case Wt.	10.5 lbs
Inner Case Pack	12/12 oz. Trays
Shelf Life	90 Days
Case Dimensions	17.75 X 15.5 X 5.875
Case Cube	0.94
Storage	Dry
Lead Time	2 Weeks
Pallet tie/high	6/10

Ingredients: ENRICHED WHEAT FLOUR (bleached wheat flour, malted barley flour, niacin, reduced iron, potassium bromate, thiamine mononitrate, riboflavin, folic acid), SHORTENING (palm oil), SUGAR, CHOCOLATE COATING (sugar, vegetable shortening (blend of partially hydrogenated soybean & coconut oils, hydrogenated cottonseed and/or palm oils. Cocoa (alkali processed), sorbitan monosterate, natural & artificial flavors, polysorbate 60, salt.), EGGS, ALMOND & VANILLA FLAVOR, BAKING POWDER, SALT.

Lot Code Explanation (Julian Date): The first number of the Julian Date represents the last number of the year. The next three numbers represent the day of manufacture. I.e.: **5101** means it was manufactured in **2015** on the **101**st day.

Allergens: Wheat, eggs, nuts(almonds), soy.

Kosher Status : No

Country of Origin: United States of America

Allergen warning: This product was made in a facility that may also use common food allergens including milk, peanuts, tree nuts, eggs and soybean.

GMO Status: Based on information provided to us by our vendors, we cannot guarantee that this item is genetically modified organism (GMO) free.

MSDS: All items manufactured by La Rosa Bakery Inc. contains ingredients which are on the GRAS (generally recognized as safe) list. These food items do not require a MSDS (material safety data sheet) and are made in compliance with the United States of America Food, Drug and Cosmetic Act.

Certificate of Manufacture: La Rosa Bakery, Inc. certifies that all products are prepared, processed and packaged in a facility inspected by the Food and Drug Administration as well as a Third Party Auditor and applicable state or local health agencies in the United States of America, using only ingredients and packaging that are approved for food use.

Nutrition Facts	
Serving Size 2 oz (57g)	
Servings per Container	
Amount per Serving	
Calories 300	Calories from Fat 160
% Daily Value*	
Total Fat 18g	27 %
Saturated Fat 5g	27 %
Trans Fat 0g	
Cholesterol 10mg	3 %
Sodium 70mg	3 %
Total Carbohydrate 32g	11 %
Dietary Fiber 1g	3 %
Sugars 18g	
Protein 2g	
Vitamin A 0 %	Vitamin C 0 %
Calcium 2 %	Iron 6 %
* Percent Daily Values are based on a 2,000 calorie diet. Your daily values may be higher or lower depending on your calorie needs.	
	Calories 2,000 2,500
Total Fat	Less than 65g 80g
Sat Fat	Less than 20g 25g
Cholesterol	Less than 300mg 300mg
Sodium	Less than 2,400mg 2,400mg
Total Carbohydrate	300g 375g
Dietary Fiber	25g 30g
Calories per gram	
Fat 9 • Carbohydrates 4 • Protein 4	

Case UPC



Case Label

<p>CHINESE FUDGE TOP COOKIE</p> <p>INGREDIENTS: ENRICHED WHEAT FLOUR (bleached wheat flour, malted barley flour, niacin, reduced iron, potassium bromate, thiamine mononitrate, riboflavin, folic acid), SHORTENING (palm oil), SUGAR, CHOCOLATE COATING (sugar, vegetable shortening (blend of partially hydrogenated soybean & coconut oils, hydrogenated cottonseed and/or palm oils. Cocoa (alkali processed), sorbitan monosterate, natural & artificial flavors, polysorbate 60, salt.), EGGS, ALMOND & VANILLA FLAVOR, BAKING POWDER, SALT.</p> <p>Contains: Wheat, eggs, nuts (almonds), soy.</p> <p>12-12 OZ TRAYS - NET WT 9 LBS REF # 1816</p> <p>MANUFACTURED BY: LA ROSA BAKERY, INC. SHREWSBURY, NJ 07702</p>	
--	--



Product Specification

Chocolate Butter Cream Sandwich, Item 1752

Ingredients: ENRICHED WHEAT FLOUR (bleached wheat flour, malted barley flour, niacin, reduced iron, potassium bromate, thiamine mononitrate, riboflavin, folic acid) , SHORTENING (palm oil), SUGAR, EGGS, CHOCOLATE, BUTTERCREME (powdered sugar, vegetable shortening, part hydrated (palm and soy bean oils) water, artificial flavors) CHOCOLATE COATING (sugar, vegetable shortening (blend of partially hydrogenated soybean & coconut oils, hydrogenated cottonseed and/or palm oils. Cocoa (alkali processed), sorbitan monosterate, natural & artificial flavors, polysorbate 60, salt.) BAKING POWDER, SALT, FLAVORS

Net Case Weight 10 lbs.

Gross Case Wt. 11 lbs.

Inner Case Pack 2/5 lb. Trays

Shelf Life 10-12 Weeks

Case Dimensions 17.75 X 15.5 X 5.187

Case Cube 0.83

Storage Cool

Lead Time 2 Weeks

Pallet tie/high 6/10

Lot Code Explanation (Julian Date): The first number of the Julian Date represents the year. The last three numbers represent the day of manufacture.

Allergens: Wheat, eggs, soy.

Kosher Status : No

Country of Origin: United States of America

Allergen warning: This product was made in a facility that may also use common food allergens including milk, peanuts, tree nuts, eggs and soybean.

GMO Status: Based on information provided to us by our vendors, we cannot guarantee that this item is genetically modified organism (GMO) free.

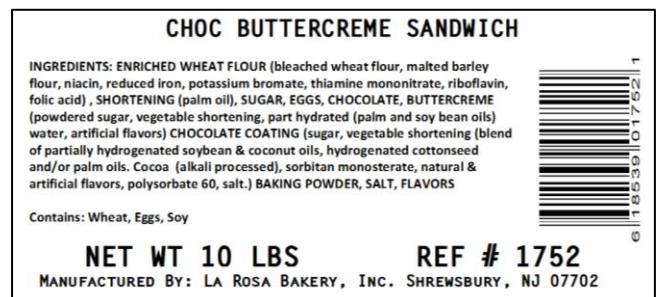
MSDS: All items manufactured by La Rosa Bakery Inc. contains ingredients which are on the GRAS (generally recognized as safe) list. These food items do not require a MSDS (material safety data sheet) and are made in compliance with the United States of America Food, Drug and Cosmetic Act.

Certificate of Manufacture: La Rosa Bakery, Inc. certifies that all products are prepared, processed and packaged in a facility inspected by the Food and Drug Administration as well as a Third Party Auditor and applicable state or local health agencies in the United States of America, using only ingredients and packaging that are approved for food use.

Case UPC



Case Label





Product Specification

Chocolate Chocolate Sandwich Cookie, Item 1750



Net Case Weight	10 lbs.
Gross Case Wt.	11 lbs.
Inner Case Pack	2/5 lb. Trays
Shelf Life	10-12 Weeks
Case Dimensions	17.75 X 15.5 X 5.187
Case Cube	0.83
Storage	Cool
Lead Time	2 Weeks
Pallet tie/high	6/10

Ingredients: ENRICHED WHEAT FLOUR (bleached wheat flour, malted barley flour, niacin, reduced iron, potassium bromate, thiamine mononitrate, riboflavin, folic acid), SHORTENING (palm oil), SUGAR, CHOCOLATE FUDGE (sugar, fudge base (vegetable shortening, part hydrated (soy, cottonseed and/or canola oils) cocoa (processed with alkali), corn syrup solids, soy oil), vegetable shortening, part hydrated (palm and soy bean oils), water), EGGS, CHOCOLATE COATING (sugar, vegetable shortening (blend of partially hydrogenated soybean & coconut oils, hydrogenated cottonseed and/or palm oils. Cocoa (alkali processed), sorbitan monostearate, natural & artificial flavors, polysorbate 60, salt.) BAKING POWDER, SALT, FLAVORS.

Lot Code Explanation (Julian Date): The first number of the Julian Date represents the last number of the year. The next three numbers represent the day of manufacture. I.e: **5101** means it was manufactured in 20**15** on the **101**st day.

Allergens: Wheat, eggs, soy.

Kosher Status : No

Country of Origin: United States of America

Allergen warning: This product was made in a facility that may also use common food allergens including milk, peanuts, tree nuts, eggs and soybean.

GMO Status: Based on information provided to us by our vendors, we cannot guarantee that this item is genetically modified organism (GMO) free.

MSDS: All items manufactured by La Rosa Bakery Inc. contains ingredients which are on the GRAS (generally recognized as safe) list. These food items do not require a MSDS (material safety data sheet) and are made in compliance with the United States of America Food, Drug and Cosmetic Act.

Certificate of Manufacture: La Rosa Bakery, Inc. certifies that all products are prepared, processed and packaged in a facility inspected by the Food and Drug Administration as well as a Third Party Auditor and applicable state or local health agencies in the United States of America, using only ingredients and packaging that are approved for food use.

Nutrition Facts			
Serving Size 2 oz (57g)			
Servings per Container			
Amount per Serving			
Calories	250	Calories from Fat 130	
% Daily Value*			
Total Fat	15g	22%	
Saturated Fat	3.5g	18%	
Trans Fat	0g		
Cholesterol	0mg	0%	
Sodium	65mg	3%	
Total Carbohydrate	29g	10%	
Dietary Fiber	1g	4%	
Sugars	15g		
Protein	3g		
Vitamin A	0%	Vitamin C	0%
Calcium	2%	Iron	6%
* Percent Daily Values are based on a 2,000 calorie diet. Your daily values may be higher or lower depending on your calorie needs.			
	Calories	2,000	2,500
Total Fat	Less than	65g	80g
Sat Fat	Less than	20g	25g
Cholesterol	Less than	300mg	300mg
Sodium	Less than	2,400mg	2,400mg
Total Carbohydrate		300g	375g
Dietary Fiber		25g	30g
Calories per gram			
	Fat	9	Carbohydrates 4 • Protein 4

Case UPC



Case Label

CHOCOLATE CHOCOLATE SANDWICH

INGREDIENTS: ENRICHED WHEAT FLOUR (bleached wheat flour, malted barley flour, niacin, reduced iron, potassium bromate, thiamine mononitrate, riboflavin, folic acid), SHORTENING (palm oil), SUGAR, CHOCOLATE FUDGE (sugar, fudge base (vegetable shortening, part hydrated (soy, cottonseed and/or canola oils) cocoa (processed with alkali), corn syrup solids, soy oil), vegetable shortening, part hydrated (palm and soy bean oils), water), EGGS, CHOCOLATE COATING (sugar, vegetable shortening (blend of partially hydrogenated soybean & coconut oils, hydrogenated cottonseed and/or palm oils. Cocoa (alkali processed), sorbitan monostearate, natural & artificial flavors, polysorbate 60, salt.) BAKING POWDER, SALT, FLAVORS

Contains: Wheat, eggs, soy.

NET WT 10 LBS REF # 1750

MANUFACTURED BY: LA ROSA BAKERY INC.
SHREWSBURY NJ 07702



Product Specification

Chocolate Dip Cookie, Item 1701

Net Case Weight	10 lbs.
Gross Case Wt.	11 lbs.
Inner Case Pack	2/5 lbs. trays
Shelf Life	10-12 weeks
Case Dimensions	17.75 X 15.5 X 5.1875
Case Cube	0.83
Storage	Cool
Lead Time	2 weeks
Pallet tie/high	6/10

Ingredients: ENRICHED WHEAT FLOUR (bleached wheat flour, malted barley flour, niacin, reduced iron, potassium bromate, thiamine mononitrate, riboflavin, folic acid), SHORTENING (palm oil), SUGAR, EGGS, CHOCOLATE SPRINKLES (sugar, hyd palm, kernel oil, cocoa powder, soya lecithin, gum arabic, and conf glaze), CHOCOLATE COATING (sugar, vegetable shortening (blend of partially hydrogenated soybean & coconut oils, hydrogenated cottonseed and/or palm oils. Cocoa (alkali processed), sorbitan monosterate, natural & artificial flavors, polysorbate 60, salt.), BAKING POWDER, SALT, FLAVORS, (F D & C YELLOW #5 & #6)

Lot Code Explanation (Julian Date): The first number of the Julian Date represents the last number of the year. The next three numbers represent the day of manufacture. I.e.: **5101** means it was manufactured in 2015 on the 101st day.

Allergens: Wheat, eggs, soy.

Kosher Status : No

Country of Origin: United States of America

Allergen warning: This product was made in a facility that may also use common food allergens including milk, peanuts, tree nuts, eggs and soybean.

GMO Status: Based on information provided to us by our vendors, we cannot guarantee that this item is genetically modified organism (GMO) free.

MSDS: All items manufactured by La Rosa Bakery Inc. contains ingredients which are on the GRAS (generally recognized as safe) list. These food items do not require a MSDS (material safety data sheet) and are made in compliance with the United States of America Food, Drug and Cosmetic Act.

Certificate of Manufacture: La Rosa Bakery, Inc. certifies that all products are prepared, processed and packaged in a facility inspected by the Food and Drug Administration as well as a Third Party Auditor and applicable state or local health agencies in the United States of America, using only ingredients and packaging that are approved for food use.

Nutrition Facts		
Serving Size 2 oz (57g)		
Servings per Container		
Amount per Serving		
Calories	220	Calories from Fat 100
	% Daily Value*	
Total Fat	11g	17%
Saturated Fat	4g	21%
Trans Fat	0g	
Cholesterol	0mg	0%
Sodium	55mg	2%
Total Carbohydrate	30g	10%
Dietary Fiber	0g	0%
Sugars	20g	
Protein	2g	
Vitamin A	0%	• Vitamin C 0%
Calcium	0%	• Iron 4%
* Percent Daily Values are based on a 2,000 calorie diet. Your daily values may be higher or lower depending on your calorie needs.		
	Calories	2,000 2,500
Total Fat	Less than	65g 80g
Sat Fat	Less than	20g 25g
Cholesterol	Less than	300mg 300mg
Sodium	Less than	2,400mg 2,400mg
Total Carbohydrate		300g 375g
Dietary Fiber		25g 30g
Calories per gram		
Fat	9	• Carbohydrates 4 • Protein 4

Case UPC



Case Label

CHOCOLATE DIP COOKIES	
<small>INGREDIENTS: ENRICHED WHEAT FLOUR (bleached wheat flour, malted barley flour, niacin, reduced iron, potassium bromate, thiamine mononitrate, riboflavin, folic acid), SHORTENING (palm oil), SUGAR, EGGS, CHOCOLATE SPRINKLES (sugar, hyd palm, kernel oil, cocoa powder, soya lecithin, gum arabic, and conf glaze), CHOCOLATE COATING (sugar, vegetable shortening (blend of partially hydrogenated soybean & coconut oils, hydrogenated cottonseed and/or palm oils. Cocoa (alkali processed), sorbitan monosterate, natural & artificial flavors, polysorbate 60, salt.), BAKING POWDER, SALT, FLAVORS, (F D & C YELLOW #5 & #6)</small>	
CONTAINS: Wheat, Eggs, Soy.	
NET WT 10 LBS	REF # 1701
MANUFACTURED BY: LA ROSA BAKERY, INC. SHREWSBURY, NJ 07702	



Product Specification

Chocolate Fudge Top Cookie, Item 1754



Net Case Weight	10 lbs.
Gross Case Wt.	11 lbs.
Inner Case Pack	2/5 lb. Trays
Shelf Life	10-12 Weeks
Case Dimensions	17.75 X 15.5 X 5.187
Case Cube	0.83
Storage	Cool
Lead Time	2 Weeks
Pallet tie/high	6/10

Ingredients: ENRICHED WHEAT FLOUR (bleached wheat flour, malted barley flour, niacin, reduced iron, potassium bromate, thiamine mononitrate, riboflavin, folic acid), SHORTENING (palm oil), SUGAR, EGGS, CHOCOLATE FUDGE (sugar, fudge base (vegetable shortening, part hydrated (soy, cottonseed and/or canola oils) cocoa (processed with alkali), corn syrup solids, soy oil), vegetable shortening, part hydrated (palm and soy bean oils), water) BAKING POWDER, SALT, FLAVORS.

Lot Code Explanation (Julian Date): The first number of the Julian Date represents the year. The last three numbers represent the day of manufacture. I.e: **5101** means it was manufactured in 2015 on the **101st** day.

Allergens: Wheat, eggs, soy.

Kosher Status : No

Country of Origin: United States of America

Allergen warning: This product was made in a facility that may also use common food allergens including milk, peanuts, tree nuts, eggs and soybean.

GMO Status: Based on information provided to us by our vendors, we cannot guarantee that this item is genetically modified organism (GMO) free.

MSDS: All items manufactured by La Rosa Bakery Inc. contains ingredients which are on the GRAS (generally recognized as safe) list. These food items do not require a MSDS (material safety data sheet) and are made in compliance with the United States of America Food, Drug and Cosmetic Act.

Certificate of Manufacture: La Rosa Bakery, Inc. certifies that all products are prepared, processed and packaged in a facility inspected by the Food and Drug Administration as well as a Third Party Auditor and applicable state or local health agencies in the United States of America, using only ingredients and packaging that are approved for food use.

Nutrition Facts			
Serving Size 2 oz (57g)			
Servings per Container			
Amount per Serving			
Calories	260	Calories from Fat	230
		% Daily Value*	
Total Fat	26g		39%
Saturated Fat	11g		57%
Trans Fat	1g		
Cholesterol	0mg		0%
Sodium	110mg		5%
Total Carbohydrate	51g		17%
Dietary Fiber	2g		7%
Sugars	26g		
Protein	5g		
Vitamin A	0%	Vitamin C	0%
Calcium	2%	Iron	10%
* Percent Daily Values are based on a 2,000 calorie diet. Your daily values may be higher or lower depending on your calorie needs.			
	Calories	2,000	2,500
Total Fat	Less than	65g	80g
Sat Fat	Less than	20g	25g
Cholesterol	Less than	300mg	300mg
Sodium	Less than	2,400mg	2,400mg
Total Carbohydrate		300g	375g
Dietary Fiber		25g	30g
Calories per gram			
Fat	9	Carbohydrates	4
		Protein	4

Case UPC



Case Label

CHOC FUDGE TOPS

INGREDIENTS: ENRICHED WHEAT FLOUR (bleached wheat flour, malted barley flour, niacin, reduced iron, potassium bromate, thiamine mononitrate, riboflavin, folic acid), SHORTENING (palm oil), SUGAR, EGGS, CHOCOLATE FUDGE (sugar, fudge base (vegetable shortening, part hydrated (soy, cottonseed and/or canola oils) cocoa (processed with alkali), corn syrup solids, soy oil), vegetable shortening, part hydrated (palm and soy bean oils), water) BAKING POWDER, SALT, FLAVORS

Contains: Wheat, Eggs, Soy

NET WT 10 LBS REF # 1754
 MANUFACTURED BY: LA ROSA BAKERY, INC. SHREWSBURY, NJ 07702



Product Specification

Chocolate Walnut Sandwich, Item 1711



Net Case Weight	20 Lbs.
Gross Case Wt.	11 Lbs.
Inner Case Pack	2/5 Lb. Trays
Shelf Life	10-12 Weeks
Case Dimensions	17.75 X 15.5 X 5.1875
Case Cube	0.83
Storage	Cool
Lead Time	2 Weeks
Pallet tie/high	6/10

Ingredients: ENRICHED WHEAT FLOUR (bleached wheat flour, malted barley flour, niacin, reduced iron, potassium bromate, thiamine mononitrate, riboflavin, folic acid), SHORTENING (palm oil), SUGAR, EGGS, CHOCOLATE FUDGE (sugar, fudge base (vegetable shortening, part hydrated (soy, cottonseed and/or canola oils) cocoa (processed with alkali), corn syrup solids, soy oil), vegetable shortening, part hydrated (palm and soy bean oils), water), WALNUTS, CHOCOLATE COATING (sugar, vegetable shortening (blend of partially hydrogenated soybean & coconut oils, hydrogenated cottonseed and/or palm oils. Cocoa (alkali processed), sorbitan monosterate, natural & artificial flavors, polysorbate 60, salt.) BAKING POWDER, SALT, FLAVORS (F D & C YELLOW #5 & #6)

Lot Code Explanation (Julian Date): The first number of the Julian Date represents the last number of the year. The next three numbers represent the day of manufacture. I.e: **5101** means it was manufactured in 20**15** on the **101**st day.

Allergens: Wheat, nuts (walnuts), eggs, soy.

Kosher Status : No

Country of Origin: United States of America

Allergen warning: This product was made in a facility that may also use common food allergens including milk, peanuts, tree nuts, eggs and soybean.

GMO Status: Based on information provided to us by our vendors, we cannot guarantee that this item is genetically modified organism (GMO) free.

MSDS: All items manufactured by La Rosa Bakery Inc. contains ingredients which are on the GRAS (generally recognized as safe) list. These food items do not require a MSDS (material safety data sheet) and are made in compliance with the United States of America Food, Drug and Cosmetic Act.

Certificate of Manufacture: La Rosa Bakery, Inc. certifies that all products are prepared, processed and packaged in a facility inspected by the Food and Drug Administration as well as a Third Party Auditor and applicable state or local health agencies in the United States of America, using only ingredients and packaging that are approved for food use.

Nutrition Facts	
Serving Size 2 oz (57g)	
Servings per Container	
Amount per Serving	
Calories 440	Calories from Fat 240
% Daily Value*	
Total Fat 27g	41%
Saturated Fat 6g	29%
Trans Fat 1.5g	
Cholesterol 0mg	0%
Sodium 95mg	4%
Total Carbohydrate 47g	16%
Dietary Fiber 2g	8%
Sugars 27g	
Protein 6g	
Vitamin A 0%	Vitamin C 0%
Calcium 2%	Iron 10%
* Percent Daily Values are based on a 2,000 calorie diet. Your daily values may be higher or lower depending on your calorie needs.	
	Calories 2,000 2,500
Total Fat	Less than 65g 80g
Sat Fat	Less than 20g 25g
Cholesterol	Less than 300mg 300mg
Sodium	Less than 2,400mg 2,400mg
Total Carbohydrate	300g 375g
Dietary Fiber	25g 30g
Calories per gram	
Fat 9 • Carbohydrates 4 • Protein 4	

Case UPC



Case Label

CHOC WALNUT SANDWICH	
<small>INGREDIENTS: ENRICHED WHEAT FLOUR (bleached wheat flour, malted barley flour, niacin, reduced iron, potassium bromate, thiamine mononitrate, riboflavin, folic acid), SHORTENING (palm oil), SUGAR, EGGS, CHOCOLATE FUDGE (sugar, fudge base (vegetable shortening, part hydrated (soy, cottonseed and/or canola oils) cocoa (processed with alkali), corn syrup solids, soy oil), vegetable shortening, part hydrated (palm and soy bean oils), water), WALNUTS, CHOCOLATE COATING (sugar, vegetable shortening (blend of partially hydrogenated soybean & coconut oils, hydrogenated cottonseed and/or palm oils. Cocoa (alkali processed), sorbitan monosterate, natural & artificial flavors, polysorbate 60, salt.) BAKING POWDER, SALT, FLAVORS (F D & C YELLOW #5 & #6)</small>	
<small>CONTAINS: Wheat, nuts (walnuts), eggs, soy.</small>	
NET WT. 10 LBS. REF # 1711	
MANUFACTURED BY: LA ROSA BAKERY, INC. <small>SHREWSBURY, NJ 07702</small>	





Product Specification

Christmas Star Cookie Tray, Item 1854



Ingredients: UN-ENRICHED WHEAT FLOUR, SHORTENING (palm oil), SUGAR, VANILLA COATING (liquid sugar, corn syrup, sugar, partially hydrogenated soybean and cottonseed oil, water)EGGS, SALT, FLAVORS, (FD & C RED #3).

Net Case Weight	10.5 lbs.
Gross Case Wt.	13 lbs.
Inner Case Pack	12/14 oz. Trays
Shelf Life	90 Days
Case Dimensions	17.75 X 15.5 X 5.88
Case Cube	0.94
Storage	Dry
Lead Time	2 Weeks
Pallet tie/high	6/10

Lot Code Explanation (Julian Date): The first number of the Julian Date represents the year. The last three numbers represent the day of manufacture. Ie: **5101** means it was manufactured in 2015 on the **101st** day.

Allergens: Wheat, eggs, soy.

Kosher Status : No

Country of Origin: United States of America

Allergen warning: This product was made in a facility that may also use common food allergens including milk, peanuts, tree nuts, eggs and soybean.

GMO Status: Based on information provided to us by our vendors, we cannot guarantee that this item is genetically modified organism (GMO) free.

MSDS: All items manufactured by La Rosa Bakery Inc. contains ingredients which are on the GRAS (generally recognized as safe) list. These food items do not require a MSDS (material safety data sheet) and are made in compliance with the United States of America Food, Drug and Cosmetic Act.

Certificate of Manufacture: La Rosa Bakery, Inc. certifies that all products are prepared, processed and packaged in a facility inspected by the Food and Drug Administration as well as a Third Party Auditor and applicable state or local health agencies in the United States of America, using only ingredients and packaging that are approved for food use.

Nutrition Facts			
Serving Size 2 26/97 oz (64g)			
Servings per Container 7			
Amount per Serving			
Calories	300	Calories from Fat	150
% Daily Value*			
Total Fat	17g		26%
Saturated Fat	4g		21%
Trans Fat	0g		
Cholesterol	0mg		0%
Sodium	100mg		4%
Total Carbohydrate	34g		11%
Dietary Fiber	1g		3%
Sugars	13g		
Protein	3g		
Vitamin A	0%	Vitamin C	0%
Calcium	0%	Iron	2%
* Percent Daily Values are based on a 2,000 calorie diet. Your daily values may be higher or lower depending on your calorie needs.			
	Calories	2,000	2,500
Total Fat	Less than	65g	80g
Sat Fat	Less than	20g	25g
Cholesterol	Less than	300mg	300mg
Sodium	Less than	2,400mg	2,400mg
Total Carbohydrate		300g	375g
Dietary Fiber		25g	30g
Calories per gram			
	Fat	9	Carbohydrates 4 • Protein 4

Case UPC



Case Label


CHRISTMAS STAR COOKIES

INGREDIENTS: UN-ENRICHED WHEAT FLOUR, SHORTENING (palm oil), SUGAR, VANILLA COATING (liquid sugar, corn syrup, sugar, partially hydrogenated soybean and cottonseed oil, water)EGGS, SALT, FLAVORS, (FD & C RED #3).

Contains: Wheat, eggs, soy.

12-14 OZ TRAYS - NET WT 10.5 LBS REF# 1854

Manufactured By: La Rosa Bakery, Inc.
Shrewsbury, NJ 07702





Product Specification

Christmas Star Cookies, Item 1954



Ingredients: UN-ENRICHED WHEAT FLOUR, SHORTENING (palm oil), SUGAR, VANILLA COATING (liquid sugar, corn syrup, sugar, partially hydrogenated soybean and cottonseed oil, water)EGGS, SALT, FLAVORS, (FD & C RED #3).

Net Case Weight	10 lbs.
Gross Case Wt.	11 lbs.
Inner Case Pack	2/5 lbs. trays
Shelf Life	10-12 weeks
Case Dimensions	17.75 x 15.5 x 5.1875
Case Cube	0.83
Storage	Cool
Lead Time	2 weeks
Pallet tie/high	6/10

Lot Code Explanation (Julian Date): The first number of the Julian Date represents the last number of the year. The next three numbers represent the day of manufacture. I.e.: **5101** means it was manufactured in **2015** on the **101**st day.

Allergens: Wheat, eggs, soy.

Kosher Status : No

Country of Origin: United States of America

Allergen warning: This product was made in a facility that may also use common food allergens including milk, peanuts, tree nuts, eggs and soybean.

GMO Status: Based on information provided to us by our vendors, we cannot guarantee that this item is genetically modified organism (GMO) free.

MSDS: All items manufactured by La Rosa Bakery Inc. contains ingredients which are on the GRAS (generally recognized as safe) list. These food items do not require a MSDS (material safety data sheet) and are made in compliance with the United States of America Food, Drug and Cosmetic Act.

Certificate of Manufacture: La Rosa Bakery, Inc. certifies that all products are prepared, processed and packaged in a facility inspected by the Food and Drug Administration as well as a Third Party Auditor and applicable state or local health agencies in the United States of America, using only ingredients and packaging that are approved for food use.

Nutrition Facts

Serving Size 2 26/97 oz (64g)
Servings per Container

Amount per Serving

Calories 300 **Calories from Fat** 150

% Daily Value*

Total Fat 17g **26 %**

Saturated Fat 4g **21 %**

Trans Fat 0g

Cholesterol 0mg **0 %**

Sodium 100mg **4 %**

Total Carbohydrate 34g **11 %**

Dietary Fiber 1g **3 %**

Sugars 13g

Protein 3g

Vitamin A **0 %** • Vitamin C **0 %**

Calcium **0 %** • Iron **2 %**

* Percent Daily Values are based on a 2,000 calorie diet. Your daily values may be higher or lower depending on your calorie needs.

Calories	2,000	2,500
----------	-------	-------

Total Fat	Less than	65g	80g
-----------	-----------	-----	-----

Sat Fat	Less than	20g	25g
---------	-----------	-----	-----

Cholesterol	Less than	300mg	300mg
-------------	-----------	-------	-------

Sodium	Less than	2,400mg	2,400mg
--------	-----------	---------	---------

Total Carbohydrate		300g	375g
--------------------	--	------	------

Dietary Fiber		25g	30g
---------------	--	-----	-----

Calories per gram

Fat 9 • Carbohydrates 4 • Protein 4

Case UPC



Case Label

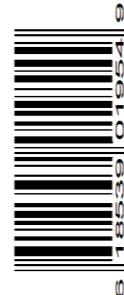
CHRISTMAS STAR COOKIES

INGREDIENTS: UN-ENRICHED WHEAT FLOUR, SHORTENING (palm oil), SUGAR, VANILLA COATING (liquid sugar, corn syrup, sugar, partially hydrogenated soybean and cottonseed oil, water)EGGS, SALT, FLAVORS, (FD & C RED #3).

Contains: Wheat, eggs, soy.

NET WT 10 LBS REF# 1954

Manufactured By: La Rosa Bakery, Inc.
Shrewsbury, NJ 07702





Product Specification

Christmas Tree Cookie Tray, Item 1853



Ingredients: UN-ENRICHED WHEAT FLOUR, SHORTENING (palm oil), SUGAR, EGGS, SALT, FLAVORS, (FD & C YELLOW #5, FD & C BLUE #1).

Lot Code Explanation (Julian Date): The first number of the Julian Date represents the year. The last three numbers represent the day of manufacture. I.e: **5101** means it was manufactured in 2015 on the **101st** day.

Allergens: Wheat, eggs.

Kosher Status : No

Country of Origin: United States of America

Allergen warning: This product was made in a facility that may also use common food allergens including milk, peanuts, tree nuts, eggs and soybean.

GMO Status: Based on information provided to us by our vendors, we cannot guarantee that this item is genetically modified organism (GMO) free.

MSDS: All items manufactured by La Rosa Bakery Inc. contains ingredients which are on the GRAS (generally recognized as safe) list. These food items do not require a MSDS (material safety data sheet) and are made in compliance with the United States of America Food, Drug and Cosmetic Act.

Certificate of Manufacture: La Rosa Bakery, Inc. certifies that all products are prepared, processed and packaged in a facility inspected by the Food and Drug Administration as well as a Third Party Auditor and applicable state or local health agencies in the United States of America, using only ingredients and packaging that are approved for food use.

Net Case Weight	10.5 lbs.
Gross Case Wt.	13 lbs.
Inner Case Pack	12/14 oz. Trays
Shelf Life	90 Days
Case Dimensions	17.75 X 15.5 X 5.88
Case Cube	0.94
Storage	Dry
Lead Time	2 Weeks
Pallet tie/high	6/10

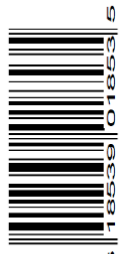
Nutrition Facts	
Serving Size 2 26/97 oz (64g)	
Servings per Container 7	
Amount per Serving	
Calories 300	Calories from Fat 150
% Daily Value*	
Total Fat 17g	26 %
Saturated Fat 4g	21 %
Trans Fat 0g	
Cholesterol 0mg	0 %
Sodium 100mg	4 %
Total Carbohydrate 34g	11 %
Dietary Fiber 1g	3 %
Sugars 13g	
Protein 3g	
Vitamin A 0 %	Vitamin C 0 %
Calcium 0 %	Iron 2 %
* Percent Daily Values are based on a 2,000 calorie diet. Your daily values may be higher or lower depending on your calorie needs.	
	Calories 2,000 2,500
Total Fat	Less than 65g 80g
Sat Fat	Less than 20g 25g
Cholesterol	Less than 300mg 300mg
Sodium	Less than 2,400mg 2,400mg
Total Carbohydrate	300g 375g
Dietary Fiber	25g 30g
Calories per gram	
Fat	9 • Carbohydrates 4 • Protein 4

Case UPC



Case Label

CHRISTMAS TREE COOKIES	
INGREDIENTS: UN-ENRICHED WHEAT FLOUR, SHORTENING (palm oil), SUGAR, EGGS, SALT, FLAVORS, (FD & C YELLOW #5, FD & C BLUE #1).	
Contains: Wheat, eggs.	
12-14 OZ TRAYS - NET WT 10.5 LBS REF# 1853	
Manufactured By: La Rosa Bakery, Inc. Shrewsbury, NJ 07702	





Product Specification

Christmas Tree Cookies, Item 1953

Ingredients: UN-ENRICHED WHEAT FLOUR, SHORTENING (palm oil), SUGAR, EGGS, SALT, FLAVORS, (FD & C YELLOW #5, FD & C BLUE #1).

Lot Code Explanation (Julian Date): The first number of the Julian Date represents the year. The last three numbers represent the day of manufacture. I.e: **5101** means it was manufactured in 2015 on the **101st** day.

Allergens: Wheat, eggs.

Kosher Status : No

Country of Origin: United States of America

Allergen warning: This product was made in a facility that may also use common food allergens including milk, peanuts, tree nuts, eggs and soybean.

GMO Status: Based on information provided to us by our vendors, we cannot guarantee that this item is genetically modified organism (GMO) free.

MSDS: All items manufactured by La Rosa Bakery Inc. contains ingredients which are on the GRAS (generally recognized as safe) list. These food items do not require a MSDS (material safety data sheet) and are made in compliance with the United States of America Food, Drug and Cosmetic Act.

Certificate of Manufacture: La Rosa Bakery, Inc. certifies that all products are prepared, processed and packaged in a facility inspected by the Food and Drug Administration as well as a Third Party Auditor and applicable state or local health agencies in the United States of America, using only ingredients and packaging that are approved for food use.

Net Case Weight	10 lbs.
Gross Case Wt.	11 lbs.
Inner Case Pack	2/5 lbs. trays
Shelf Life	10-12 weeks
Case Dimensions	17.75 x 15.5 x 5.1875
Case Cube	0.83
Storage	Cool
Lead Time	2 weeks
Pallet tie/high	6/10

Nutrition Facts	
Serving Size 2 26/97 oz (64g)	
Servings per Container	
Amount per Serving	
Calories 300	Calories from Fat 150
% Daily Value*	
Total Fat 17g	26 %
Saturated Fat 4g	21 %
<i>Trans</i> Fat 0g	
Cholesterol 0mg	0 %
Sodium 100mg	4 %
Total Carbohydrate 34g	11 %
Dietary Fiber 1g	3 %
Sugars 13g	
Protein 3g	
Vitamin A 0%	Vitamin C 0%
Calcium 0%	Iron 2%
* Percent Daily Values are based on a 2,000 calorie diet. Your daily values may be higher or lower depending on your calorie needs.	
	Calories 2,000 2,500
Total Fat	Less than 65g 80g
Sat Fat	Less than 20g 25g
Cholesterol	Less than 300mg 300mg
Sodium	Less than 2,400mg 2,400mg
Total Carbohydrate	300g 375g
Dietary Fiber	25g 30g
Calories per gram	
Fat 9 • Carbohydrates 4 • Protein 4	

Case UPC



Case Label

CHRISTMAS TREE COOKIES	
INGREDIENTS: UN-ENRICHED WHEAT FLOUR, SHORTENING (palm oil), SUGAR, EGGS, SALT, FLAVORS, (FD & C YELLOW #5, FD & C BLUE #1).	
Contains: Wheat, eggs.	
NET WT 10 LBS REF# 1953	
Manufactured By: La Rosa Bakery, Inc. Shrewsbury, NJ 07702	



Net Case Weight	10 lbs.
Gross Case Wt.	11 lbs.
Inner Case Pack	2/5 lbs. trays
Shelf Life	10-12 weeks
Case Dimensions	17.75 x 15.5 x 5.1875
Case Cube	0.83
Storage	Cool
Lead Time	2 weeks
Pallet tie/high	6/10

Product Specification

Florentine Lace Cookie, Item 1717

Ingredients: INGREDIENTS: ENRICHED WHEAT FLOUR (bleached wheat flour, malted barley flour, niacin, reduced iron, potassium bromate, thiamine mononitrate, riboflavin, folic acid), BROWN SUGAR, SLICED ALMONDS, BUTTER, MARGARINE (liquid soybean oil, part hyd soybean oil, water, salt, vegetable mono & di-glycerides, vegetable lecithin, sodium, benzonate added as a preservative, artificial flavor, colored with beta carotene, vitamin a palmitate added) WATER, CHOCOLATE COATING (sugar, vegetable shortening (blend of partially hydrogenated soybean & coconut oils, hydrogenated cottonseed and/or palm oils. Cocoa (alkali processed), sorbitan monosterate, natural & artificial flavors, polysorbate 60, salt.) SALT, CINNAMON, FLAVORS

Lot Code Explanation (Julian Date): The first number of the Julian Date represents the last number of the year. The next three numbers represent the day of manufacture. I.e.: **5101** means it was manufactured in 2015 on the 101st day.

Allergens: *Wheat, milk, nuts (almonds), soy.*

Kosher Status : No

Country of Origin: United States of America

Allergen warning: This product was made in a facility that may also use common food allergens including milk, peanuts, tree nuts, eggs and soybean.

GMO Status: Based on information provided to us by our vendors, we cannot guarantee that this item is genetically modified organism (GMO) free.

MSDS: All items manufactured by La Rosa Bakery Inc. contains ingredients which are on the GRAS (generally recognized as safe) list. These food items do not require a MSDS (material safety data sheet) and are made in compliance with the United States of America Food, Drug and Cosmetic Act.

Certificate of Manufacture: La Rosa Bakery, Inc. certifies that all products are prepared, processed and packaged in a facility inspected by the Food and Drug Administration as well as a Third Party Auditor and applicable state or local health agencies in the United States of America, using only ingredients and packaging that are approved for food use.

Nutrition Facts	
Serving Size 2 oz (57g)	
Servings per Container	
Amount per Serving	
Calories 240	Calories from Fat 90
% Daily Value*	
Total Fat 10g	16 %
Saturated Fat 2.5g	14 %
<i>Trans</i> Fat 0g	
Cholesterol 5mg	2 %
Sodium 125mg	5 %
Total Carbohydrate 35g	12 %
Dietary Fiber 1g	3 %
Sugars 24g	
Protein 3g	
Vitamin A 6 %	Vitamin C 0 %
Calcium 4 %	Iron 10 %
* Percent Daily Values are based on a 2,000 calorie diet. Your daily values may be higher or lower depending on your calorie needs.	
	Calories 2,000 2,500
Total Fat	Less than 65g 80g
Sat Fat	Less than 20g 25g
Cholesterol	Less than 300mg 300mg
Sodium	Less than 2,400mg 2,400mg
Total Carbohydrate	300g 375g
Dietary Fiber	25g 30g
Calories per gram	
Fat 9 • Carbohydrates 4 • Protein 4	

Case UPC



Case Label

FLORENTINE LACE COOKIE	
INGREDIENTS: ENRICHED WHEAT FLOUR (bleached wheat flour, malted barley flour, niacin, reduced iron, potassium bromate, thiamine mononitrate, riboflavin, folic acid), BROWN SUGAR, SLICED ALMONDS, BUTTER, MARGARINE (liquid soybean oil, part hyd soybean oil, water, salt, vegetable mono & di-glycerides, vegetable lecithin, sodium, benzonate added as a preservative, artificial flavor, colored with beta carotene, vitamin a palmitate added) WATER, CHOCOLATE COATING (sugar, vegetable shortening (blend of partially hydrogenated soybean & coconut oils, hydrogenated cottonseed and/or palm oils. Cocoa (alkali processed), sorbitan monosterate, natural & artificial flavors, polysorbate 60, salt.) SALT, CINNAMON, FLAVORS	
Contains: Wheat, milk, nuts (almonds), soy.	
NET WT 10 LBS REF # 1717	
MANUFACTURED BY: LA ROSA BAKERY, INC.	
SHREWSBURY, NJ 07702	



Product Specification

Florentine Lace Tray Item 1812



Net Case Weight	10.5 lbs.
Gross Case Wt.	13 lbs.
Inner Case Pack	12/14 oz. Trays
Shelf Life	90 Days
Case Dimensions	17.75 X 15.5 X 5.875
Case Cube	0.94
Storage	Dry
Lead Time	2 Weeks
Pallet tie/high	6/10

Ingredients: ENRICHED WHEAT FLOUR (bleached wheat flour, malted barley flour, niacin, reduced iron, potassium bromate, thiamine mononitrate, riboflavin, folic acid), BROWN SUGAR, SLICED ALMONDS, BUTTER, MARGARINE (liquid soybean oil, part hyd soybean oil, water, salt, vegetable mono & di-glycerides, vegetable lecithin, sodium, benzonate added as a preservative, artificial flavor, colored with beta carotene, vitamin a palmitate added) WATER, CHOCOLATE COATING (sugar, vegetable shortening (blend of partially hydrogenated soybean & coconut oils, hydrogenated cottonseed and/or palm oils. Cocoa (alkali processed), sorbitan monosterate, natural & artificial flavors, polysorbate 60, salt.) SALT, CINNAMON, FLAVORS.

Lot Code Explanation (Julian Date): The first number of the Julian Date represents the last number of the year. The next three numbers represent the day of manufacture. I.e.: **5101** means it was manufactured in **2015** on the **101st** day.

Allergens: Wheat, eggs, milk, nuts(almonds), soy.

Kosher Status : No

Country of Origin: United States of America

Allergen warning: This product was made in a facility that may also use common food allergens including milk, peanuts, tree nuts, eggs and soybean.

GMO Status: Based on information provided to us by our vendors, we cannot guarantee that this item is genetically modified organism (GMO) free.

MSDS: All items manufactured by La Rosa Bakery Inc. contains ingredients which are on the GRAS (generally recognized as safe) list. These food items do not require a MSDS (material safety data sheet) and are made in compliance with the United States of America Food, Drug and Cosmetic Act.

Certificate of Manufacture: La Rosa Bakery, Inc. certifies that all products are prepared, processed and packaged in a facility inspected by the Food and Drug Administration as well as a Third Party Auditor and applicable state or local health agencies in the United States of America, using only ingredients and packaging that are approved for food use.

Nutrition Facts	
Serving Size 2 oz (57g)	
Servings per Container	
Amount per Serving	
Calories 240	Calories from Fat 90
% Daily Value*	
Total Fat 10g	16%
Saturated Fat 2.5g	14%
Trans Fat 0g	
Cholesterol 5mg	2%
Sodium 125mg	5%
Total Carbohydrate 35g	12%
Dietary Fiber 1g	3%
Sugars 24g	
Protein 3g	
Vitamin A 6%	Vitamin C 0%
Calcium 4%	Iron 10%
* Percent Daily Values are based on a 2,000 calorie diet. Your daily values may be higher or lower depending on your calorie needs.	
	Calories 2,000 2,500
Total Fat	Less than 65g 80g
Sat Fat	Less than 20g 25g
Cholesterol	Less than 300mg 300mg
Sodium	Less than 2,400mg 2,400mg
Total Carbohydrate	300g 375g
Dietary Fiber	25g 30g
Calories per gram	
Fat 9 • Carbohydrates 4 • Protein 4	

Case UPC



Case Label

FLORENTINE LACE COOKIES	
INGREDIENTS: ENRICHED WHEAT FLOUR (bleached wheat flour, malted barley flour, niacin, reduced iron, potassium bromate, thiamine mononitrate, riboflavin, folic acid), BROWN SUGAR, SLICED ALMONDS, BUTTER, MARGARINE (liquid soybean oil, part hyd soybean oil, water, salt, vegetable mono & di-glycerides, vegetable lecithin, sodium, benzonate added as a preservative, artificial flavor, colored with beta carotene, vitamin a palmitate added) WATER, CHOCOLATE COATING (sugar, vegetable shortening (blend of partially hydrogenated soybean & coconut oils, hydrogenated cottonseed and/or palm oils. Cocoa (alkali processed), sorbitan monosterate, natural & artificial flavors, polysorbate 60, salt.) SALT, CINNAMON, FLAVORS.	
Contains: Wheat, milk, nuts (almonds), eggs, soy.	
12 - 140Z TRAYS - NET WT.10.5 LBS REF # 1812	
MANUFACTURED BY: LA ROSA BAKERY, INC. SHREWSBURY, NJ 07702	



Product Specification

Ginger Bread Man Cookie Tray, Item 1856



Net Case Weight	9 lbs.
Gross Case Wt.	10.5 lbs
Inner Case Pack	12/12 oz. Trays
Shelf Life	90 Days
Case Dimensions	17.75 X 15.5 X 5.875
Case Cube	0.83
Storage	Dry
Lead Time	2 Weeks
Pallet tie/high	6/10

Ingredients: UN-ENRICHED WHEAT FLOUR, SUGAR, BROWN SUGAR, MARGARINE (liquid soybean oil, part hyd soybean oil, water, salt, vegetable mono & di-glycerides, vegetable lecithin, sodium, benzonate added as a preservative, artificial flavor, colored with beta carotene, vitamin a palmitate added) EGGS, ALLSPICE, BAKING POWDER.

Lot Code Explanation (Julian Date): The first number of the Julian Date represents the last number of the year. The next three numbers represent the day of manufacture. I.e.: **5101** means it was manufactured in **2015** on the **101**st day.

Allergens: Wheat, eggs, soy.

Kosher Status : No

Country of Origin: United States of America

Allergen warning: This product was made in a facility that may also use common food allergens including milk, peanuts, tree nuts, eggs and soybean.

GMO Status: Based on information provided to us by our vendors, we cannot guarantee that this item is genetically modified organism (GMO) free.

MSDS: All items manufactured by La Rosa Bakery Inc. contains ingredients which are on the GRAS (generally recognized as safe) list. These food items do not require a MSDS (material safety data sheet) and are made in compliance with the United States of America Food, Drug and Cosmetic Act.

Certificate of Manufacture: La Rosa Bakery, Inc. certifies that all products are prepared, processed and packaged in a facility inspected by the Food and Drug Administration as well as a Third Party Auditor and applicable state or local health agencies in the United States of America, using only ingredients and packaging that are approved for food use.

Nutrition Facts

Serving Size 2 oz (57g)	
Servings per Container 6	
Amount per Serving	
Calories 250	Calories from Fat 70
% Daily Value*	
Total Fat 8g	12 %
Saturated Fat 2g	10 %
Trans Fat 0g	
Cholesterol 0mg	0 %
Sodium 370mg	16 %
Total Carbohydrate 42g	14 %
Dietary Fiber 1g	4 %
Sugars 0g	
Protein 2g	
Vitamin A 0 %	Vitamin C 0 %
Calcium 6 %	Iron 15 %
* Percent Daily Values are based on a 2,000 calorie diet. Your daily values may be higher or lower depending on your calorie needs.	
	Calories 2,000 2,500
Total Fat	Less than 65g 80g
Sat Fat	Less than 20g 25g
Cholesterol	Less than 300mg 300mg
Sodium	Less than 2,400mg 2,400mg
Total Carbohydrate	300g 375g
Dietary Fiber	25g 30g
Calories per gram	
Fat 9 • Carbohydrates 4 • Protein 4	

Case UPC



Case Label


GINGERBREAD MAN COOKIES

INGREDIENTS: UN-ENRICHED WHEAT FLOUR, SUGAR, BROWN SUGAR, MARGARINE (liquid soybean oil, part hyd soybean oil, water, salt, vegetable mono & di-glycerides, vegetable lecithin, sodium, benzonate added as a preservative, artificial flavor, colored with beta carotene, vitamin a palmitate added) EGGS, ALLSPICE, BAKING POWDER.

Contains: Wheat, eggs, soy.

12-12 OZ TRAYS - NET WT 9.0 LBS REF# 1856

Manufactured By: La Rosa Bakery, Inc.
Shrewsbury, NJ 07702





Product Specification

Ginger Bread Man Cookies, Item 1956



Net Case Weight	10 lbs.
Gross Case Wt.	11 lbs.
Inner Case Pack	2/5 lbs. trays
Shelf Life	10-12 weeks
Case Dimensions	17.75 x 15.5 x 5.1875
Case Cube	0.83
Storage	Cool
Lead Time	2 weeks
Pallet tie/high	6/10

Ingredients: UN-ENRICHED WHEAT FLOUR, SUGAR, BROWN SUGAR, MARGARINE (liquid soybean oil, part hyd soybean oil, water, salt, vegetable mono & di-glycerides, vegetable lecithin, sodium, benzonate added as a preservative, artificial flavor, colored with beta carotene, vitamin a palmitate added) EGGS, ALLSPICE, BAKING POWDER.

Lot Code Explanation (Julian Date): The first number of the Julian Date represents the last number of the year. The next three numbers represent the day of manufacture. I.e.: **5101** means it was manufactured in **2015** on the **101st** day.

Allergens: Wheat, eggs, soy.

Kosher Status : No

Country of Origin: United States of America

Allergen warning: This product was made in a facility that may also use common food allergens including milk, peanuts, tree nuts, eggs and soybean.

GMO Status: Based on information provided to us by our vendors, we cannot guarantee that this item is genetically modified organism (GMO) free.

MSDS: All items manufactured by La Rosa Bakery Inc. contains ingredients which are on the GRAS (generally recognized as safe) list. These food items do not require a MSDS (material safety data sheet) and are made in compliance with the United States of America Food, Drug and Cosmetic Act.

Certificate of Manufacture: La Rosa Bakery, Inc. certifies that all products are prepared, processed and packaged in a facility inspected by the Food and Drug Administration as well as a Third Party Auditor and applicable state or local health agencies in the United States of America, using only ingredients and packaging that are approved for food use.

Nutrition Facts			
Serving Size 2 oz (57g)			
Servings per Container			
Amount per Serving			
Calories	250	Calories from Fat 70	
% Daily Value*			
Total Fat	8g	12%	
Saturated Fat	2g	10%	
Trans Fat	0g		
Cholesterol	0mg	0%	
Sodium	370mg	16%	
Total Carbohydrate	42g	14%	
Dietary Fiber	1g	4%	
Sugars	0g		
Protein	2g		
Vitamin A	0%	Vitamin C	0%
Calcium	6%	Iron	15%
* Percent Daily Values are based on a 2,000 calorie diet. Your daily values may be higher or lower depending on your calorie needs.			
		Calories	2,000 2,500
Total Fat	Less than	65g	80g
Sat Fat	Less than	20g	25g
Cholesterol	Less than	300mg	300mg
Sodium	Less than	2,400mg	2,400mg
Total Carbohydrate		300g	375g
Dietary Fiber		25g	30g
Calories per gram			
Fat 9		Carbohydrates 4	Protein 4

Case UPC



Case Label

GINGERBREAD MAN COOKIES	
<p>INGREDIENTS: UN-ENRICHED WHEAT FLOUR, SUGAR, BROWN SUGAR, MARGARINE (liquid soybean oil, part hyd soybean oil, water, salt, vegetable mono & di-glycerides, vegetable lecithin, sodium, benzonate added as a preservative, artificial flavor, colored with beta carotene, vitamin a palmitate added) EGGS, ALLSPICE, BAKING POWDER.</p>	
<p>Contains: Wheat, eggs, soy.</p>	
<p>NET WT 10 LBS REF# 1956</p> <p>Manufactured By: La Rosa Bakery, Inc.</p> <p>Shrewsbury, NJ 07702</p>	



Product Specification

Green Cherry Cookie, Item 1719

Net Case Weight	10 lbs.
Gross Case Wt.	11 lbs.
Inner Case Pack	2/5 lbs.
Shelf Life	10-12 Weeks
Case Dimensions	17.75 X 15.5 X 5.187
Case Cube	0.83
Storage	Cool
Lead Time	2 Weeks
Pallet tie/high	6/10

Ingredients: ENRICHED WHEAT FLOUR (bleached wheat flour, malted barley flour, niacin, reduced iron, potassium bromate, thiamine mononitrate, riboflavin, folic acid), SHORTENING (palm oil), SUGAR, EGGS, BAKING POWDER, SALT, FLAVORS, (F D & C YELLOW #5, #6) GREEN CHERRIES, F D & C YELLOW #5, BLUE #1.

Lot Code Explanation (Julian Date): The first number of the Julian Date represents the last number of the year. The next three numbers represent the day of manufacture. Ie: **5101** means it was manufactured in 20**15** on the **101**st day.

Allergens: Wheat, eggs.

Kosher Status : No

Country of Origin: United States of America

Allergen warning: This product was made in a facility that may also use common food allergens including milk, peanuts, tree nuts, eggs and soybean.

GMO Status: Based on information provided to us by our vendors, we cannot guarantee that this item is genetically modified organism (GMO) free.

MSDS: All items manufactured by La Rosa Bakery Inc. contains ingredients which are on the GRAS (generally recognized as safe) list. These food items do not require a MSDS (material safety data sheet) and are made in compliance with the United States of America Food, Drug and Cosmetic Act.

Certificate of Manufacture: La Rosa Bakery, Inc. certifies that all products are prepared, processed and packaged in a facility inspected by the Food and Drug Administration as well as a Third Party Auditor and applicable state or local health agencies in the United States of America, using only ingredients and packaging that are approved for food use.

Nutrition Facts	
Serving Size 2 oz (57g)	
Servings per Container	
Amount per Serving	
Calories 190	Calories from Fat 200
% Daily Value*	
Total Fat 22g	34%
Saturated Fat 11g	54%
Trans Fat 0g	
Cholesterol 0mg	0%
Sodium 110mg	5%
Total Carbohydrate 42g	14%
Dietary Fiber 1g	4%
Sugars 15g	
Protein 5g	
Vitamin A 0%	Vitamin C 0%
Calcium 2%	Iron 8%
* Percent Daily Values are based on a 2,000 calorie diet. Your daily values may be higher or lower depending on your calorie needs.	
	Calories 2,000 2,500
Total Fat	Less than 65g 80g
Sat Fat	Less than 20g 25g
Cholesterol	Less than 300mg 300mg
Sodium	Less than 2,400mg 2,400mg
Total Carbohydrate	300g 375g
Dietary Fiber	25g 30g
Calories per gram	
Fat 9 • Carbohydrates 4 • Protein 4	

Case UPC



Case Label

GREEN CHERRY COOKIE	
<p>INGREDIENTS: ENRICHED WHEAT FLOUR (bleached wheat flour, malted barley flour, niacin, reduced iron, potassium bromate, thiamine mononitrate, riboflavin, folic acid), SHORTENING (palm oil), SUGAR, EGGS, BAKING POWDER, SALT, FLAVORS, (F D & C YELLOW #5, #6) GREEN CHERRIES, F D & C YELLOW #5, BLUE #1</p>	
<p>Contains: Wheat, Eggs</p>	
NET WT 10 LBS	REF # 1719
<p>MANUFACTURED BY: LA ROSA BAKERY, INC. SHREWSBURY, NJ</p>	



Product Specification

Green Dip Cookie, Item 1706



Net Case Weight	10 lbs.
Gross Case Wt.	11 lbs.
Inner Case Pack	2/5 lbs. trays
Shelf Life	10-12 weeks
Case Dimensions	17.75 x 15.5 x 5.1875
Case Cube	0.83
Storage	Cool
Lead Time	2 weeks
Pallet tie/high	6/10

Ingredients: ENRICHED WHEAT FLOUR (bleached wheat flour, malted barley flour, niacin, reduced iron, potassium bromate, thiamine mononitrate, riboflavin, folic acid), SHORTENING (palm oil), SUGAR, EGGS, GREEN SPRINKLES (corn starch, soya lecithin, gum arabic), CHOCOLATE COATING (sugar, vegetable shortening (blend of partially hydrogenated soybean & coconut oils, hydrogenated cottonseed and/or palm oils. Cocoa (alkali processed), sorbitan monosterate, natural & artificial flavors, polysorbate 60, salt.), BAKING POWDER, SALT, FLAVORS, (F D & C YELLOW #5 & #6, BLUE #1).

Lot Code Explanation (Julian Date): The first number of the Julian Date represents the year. The last three numbers represent the day of manufacture. Ie: **5101** means it was manufactured in **2015** on the **101st** day.

Allergens: Wheat, eggs, soy.

Kosher Status : No

Country of Origin: United States of America

Allergen warning: This product was made in a facility that may also use common food allergens including milk, peanuts, tree nuts, eggs and soybean.

GMO Status: Based on information provided to us by our vendors, we cannot guarantee that this item is genetically modified organism (GMO) free.

Nutrition Facts	
Serving Size 2 oz (57g)	
Servings per Container 7	
Amount per Serving	
Calories 220	Calories from Fat 100
% Daily Value*	
Total Fat 11g	17 %
Saturated Fat 4g	21 %
Trans Fat 0g	
Cholesterol 0mg	0 %
Sodium 55mg	2 %
Total Carbohydrate 30g	10 %
Dietary Fiber 0g	0 %
Sugars 20g	
Protein 2g	
Vitamin A 0%	Vitamin C 0%
Calcium 0%	Iron 4%
* Percent Daily Values are based on a 2,000 calorie diet. Your daily values may be higher or lower depending on your calorie needs.	
	Calories 2,000 2,500
Total Fat	Less than 65g 80g
Sat Fat	Less than 20g 25g
Cholesterol	Less than 300mg 300mg
Sodium	Less than 2,400mg 2,400mg
Total Carbohydrate	300g 375g
Dietary Fiber	25g 30g
Calories per gram	
Fat 9 • Carbohydrates 4 • Protein 4	

MSDS: All items manufactured by La Rosa Bakery Inc. contains ingredients which are on the GRAS (generally recognized as safe) list. These food items do not require a MSDS (material safety data sheet) and are made in compliance with the United States of America Food, Drug and Cosmetic Act.

Certificate of Manufacture: La Rosa Bakery, Inc. certifies that all products are prepared, processed and packaged in a facility inspected by the Food and Drug Administration as well as a Third Party Auditor and applicable state or local health agencies in the United States of America, using only ingredients and packaging that are approved for food use.

Case UPC



Case Label

GREEN DIP COOKIES	
INGREDIENTS: ENRICHED WHEAT FLOUR (bleached wheat flour, malted barley flour, niacin, reduced iron, potassium bromate, thiamine mononitrate, riboflavin, folic acid), SHORTENING (palm oil), SUGAR, EGGS, GREEN SPRINKLES (corn starch, soya lecithin, gum arabic), CHOCOLATE COATING (sugar, vegetable shortening (blend of partially hydrogenated soybean & coconut oils, hydrogenated cottonseed and/or palm oils. Cocoa (alkali processed), sorbitan monosterate, natural & artificial flavors, polysorbate 60, salt.), BAKING POWDER, SALT, FLAVORS, (F D & C YELLOW #5 & #6, BLUE #1)	
CONTAINS: Wheat, Eggs, Soy.	
NET WT. 10 LBS.	REF # 1706
MANUFACTURED BY: LA ROSA BAKERY, INC.	
SHREWSBURY, NJ 07702	



Product Specification

1/2 Moon Sugar Cookie, Item 1726

Ingredients: UNENRICHED WHEAT FLOUR, SHORTENING (palm oil), SUGAR, WATER, EGGS, AMONIA, SALT, FLAVORS, F D & C YELLOW #5 & #6

Lot Code Explanation (Julian Date): The first number of the Julian Date represents the year. The last three numbers represent the day of manufacture.

Net Case Weight 10 lbs.

Gross Case Wt. 11 lbs.

Allergens: Wheat, eggs.

Inner Case Pack 2/5 lb. Trays

Kosher Status : No

Shelf Life 10-12 Weeks

Country of Origin: United States of America

Case Dimensions 17.75 X 15.5 X 5.187

Allergen warning: This product was made in a facility that may also use common food allergens including milk, peanuts, tree nuts, eggs and soybean.

Case Cube 0.83

GMO Status: Based on information provided to us by our vendors, we cannot guarantee that this item is genetically modified organism (GMO) free.

Storage Cool

Lead Time 2 Weeks

MSDS: All items manufactured by La Rosa Bakery Inc. contains ingredients which are on the GRAS (generally recognized as safe) list. These food items do not require a MSDS (material safety data sheet) and are made in compliance with the United States of America Food, Drug and Cosmetic Act.

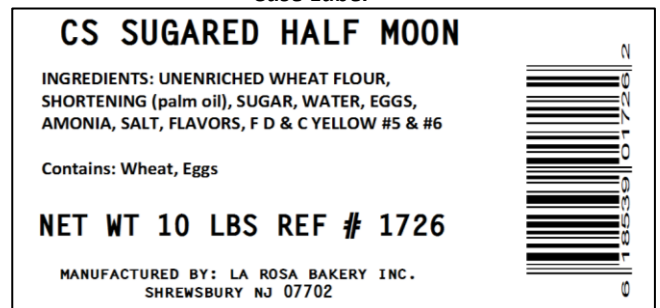
Pallet tie/high 6/10

Certificate of Manufacture: La Rosa Bakery, Inc. certifies that all products are prepared, processed and packaged in a facility inspected by the Food and Drug Administration as well as a Third Party Auditor and applicable state or local health agencies in the United States of America, using only ingredients and packaging that are approved for food use.

Case UPC



Case Label





Product Specification

Mini Butter Rings, Item 1785

Net Case Weight	10 lbs.
Gross Case Wt.	11 lbs.
Inner Case Pack	2/5 lbs. trays
Shelf Life	10-12 weeks
Case Dimensions	17.75 x 15.5 x 5.1875
Case Cube	0.83
Storage	Cool
Lead Time	2 weeks
Pallet tie/high	6/10

Ingredients: ENRICHED WHEAT FLOUR (bleached wheat flour, malted barley flour, niacin, reduced iron, potassium bromate, thiamine mononitrate, riboflavin, folic acid), SHORTENING (palm oil), SUGAR, EGGS, CHOCOLATE COATING (sugar, vegetable shortening (blend of partially hydrogenated soybean & coconut oils, hydrogenated cottonseed and/or palm oils. Cocoa (alkali processed), (sorbitan monosterate, natural & artificial flavors, polysorbate 60, salt.)(F D & C YELLOW #5 & #6)

Lot Code Explanation (Julian Date): The first number of the Julian Date represents the year. The last three numbers represent the day of manufacture.

Allergens: Wheat, eggs, soy.

Kosher Status : No

Country of Origin: United States of America

Allergen warning: This product was made in a facility that may also use common food allergens including milk, peanuts, tree nuts, eggs and soybean.

GMO Status: Based on information provided to us by our vendors, we cannot guarantee that this item is genetically modified organism (GMO) free.

MSDS: All items manufactured by La Rosa Bakery Inc. contains ingredients which are on the GRAS (generally recognized as safe) list. These food items do not require a MSDS (material safety data sheet) and are made in compliance with the United States of America Food, Drug and Cosmetic Act.

Certificate of Manufacture: La Rosa Bakery, Inc. certifies that all products are prepared, processed and packaged in a facility inspected by the Food and Drug Administration as well as a Third Party Auditor and applicable state or local health agencies in the United States of America, using only ingredients and packaging that are approved for food use.

Case UPC

Case Label

MINI BUTTER RINGS	
<small>INGREDIENTS: ENRICHED WHEAT FLOUR (bleached wheat flour, malted barley flour, niacin, reduced iron, potassium bromate, thiamine mononitrate, riboflavin, folic acid), SHORTENING (palm oil), SUGAR, EGGS, CHOCOLATE COATING (sugar, vegetable shortening (blend of partially hydrogenated soybean & coconut oils, hydrogenated cottonseed and/or palm oils. Cocoa (alkali processed), (sorbitan monosterate, natural & artificial flavors, polysorbate 60, salt.)(F D & C YELLOW #5 & #6)</small>	
<small>Contains: Wheat, Eggs, Soy</small>	
NET WT 10 LBS	REF # 1785
MANUFACTURED BY: LA ROSA BAKERY INC.	
SHREWSBURY NJ 07702	



Product Specification

Multi-Color Dip Cookie, Item 1702



Net Case Weight	10 lbs.
Gross Case Wt.	11 lbs.
Inner Case Pack	2/5 lbs. trays
Shelf Life	10-12 weeks
Case Dimensions	17.75 x 15.5 x 5.1875
Case Cube	0.83
Storage	Cool
Lead Time	2 weeks
Pallet tie/high	6/10

Ingredients: ENRICHED WHEAT FLOUR (bleached wheat flour, malted barley flour, niacin, reduced iron, potassium bromate, thiamine mononitrate, riboflavin, folic acid), SHORTENING (palm oil), SUGAR, EGGS, MULTI-COLOR SPRINKLES (corn starch, soya lecithin, gum arabic), CHOCOLATE COATING (sugar, vegetable shortening (blend of partially hydrogenated soybean & coconut oils, hydrogenated cottonseed and/or palm oils. Cocoa (alkali processed), sorbitan monosterate, natural & artificial flavors, polysorbate 60, salt.), BAKING POWDER, SALT, FLAVORS, (F D & C YELLOW #5 & #6 RED #40 RED #3 (ERYTHOSINE) BLUE #1).

Lot Code Explanation (Julian Date): The first number of the Julian Date represents the last number of the year. The next three numbers represent the day of manufacture. I.e.: 5101 means it was manufactured in 2015 on the 101st day.

Allergens: Wheat, eggs, soy.

Kosher Status : No

Country of Origin: United States of America

Allergen warning: This product was made in a facility that may also use common food allergens including milk, peanuts, tree nuts, eggs and soybean.

GMO Status: Based on information provided to us by our vendors, we cannot guarantee that this item is genetically modified organism (GMO) free.

MSDS: All items manufactured by La Rosa Bakery Inc. contains ingredients which are on the GRAS (generally recognized as safe) list. These food items do not require a MSDS (material safety data sheet) and are made in compliance with the United States of America Food, Drug and Cosmetic Act.

Certificate of Manufacture: La Rosa Bakery, Inc. certifies that all products are prepared, processed and packaged in a facility inspected by the Food and Drug Administration as well as a Third Party Auditor and applicable state or local health agencies in the United States of America, using only ingredients and packaging that are approved for food use.

Nutrition Facts	
Serving Size 2 oz (57g)	
Servings per Container	
Amount per Serving	
Calories 260	Calories from Fat 220
% Daily Value*	
Total Fat 24g	38%
Saturated Fat 13g	66%
Trans Fat 0g	
Cholesterol 0mg	0%
Sodium 110mg	5%
Total Carbohydrate 53g	18%
Dietary Fiber 1g	3%
Sugars 29g	
Protein 5g	
Vitamin A 0%	Vitamin C 0%
Calcium 2%	Iron 8%
* Percent Daily Values are based on a 2,000 calorie diet. Your daily values may be higher or lower depending on your calorie needs.	
	Calories 2,000 2,500
Total Fat	Less than 65g 80g
Sat Fat	Less than 20g 25g
Cholesterol	Less than 300mg 300mg
Sodium	Less than 2,400mg 2,400mg
Total Carbohydrate	300g 375g
Dietary Fiber	25g 30g
Calories per gram	
Fat 9 • Carbohydrates 4 • Protein 4	

Case UPC



Case Label





Product Specification

Peanut Butter & Jelly Sandwich Cookie, Item 1720



Net Case Weight	10 lbs.
Gross Case Wt.	11 lbs.
Inner Case Pack	2/5 lbs.
Shelf Life	10-12 Weeks
Case Dimensions	17.75 X 15.5 X 5.187
Case Cube	0.83
Storage	Cool
Lead Time	2 Weeks
Pallet tie/high	6/10

Ingredients: UN-ENRICHED WHEAT FLOUR, SHORTENING (palm oil), SUGAR, EGGS, PEANUT BUTTER(roasted peanuts, salt), RASPBERRY JAM(raspberries, sugar, corn syrup, pectin, citric acid & sodium citrate) CHOCOLATE COATING(sugar, vegetable shortening(blend of partially hydrogenated soybean & coconut oils, hydrogenated cottonseed and/or palm oils. Cocoa(alkali processed), sorbitan monostearate, natural & artificial flavors, polysorbate 60, salt.) SALT, FLAVORS (F D & C YELLOW #5 & #6)

Lot Code Explanation (Julian Date): The first number of the Julian Date represents the last number of the year. The next three numbers represent the day of manufacture. I.e.: **5101** means it was manufactured in 20**15** on the **101**st day.

Allergens: Wheat, eggs, nuts(peanuts), soy.

Kosher Status : No

Country of Origin: United States of America

Allergen warning: This product was made in a facility that may also use common food allergens including milk, peanuts, tree nuts, eggs and soybean.

GMO Status: Based on information provided to us by our vendors, we cannot guarantee that this item is genetically modified organism (GMO) free.

MSDS: All items manufactured by La Rosa Bakery Inc. contains ingredients which are on the GRAS (generally recognized as safe) list. These food items do not require a MSDS (material safety data sheet) and are made in compliance with the United States of America Food, Drug and Cosmetic Act.

Certificate of Manufacture: La Rosa Bakery, Inc. certifies that all products are prepared, processed and packaged in a facility inspected by the Food and Drug Administration as well as a Third Party Auditor and applicable state or local health agencies in the United States of America, using only ingredients and packaging that are approved for food use.

Nutrition Facts			
Serving Size 100 g			
Servings per Container			
Amount per Serving			
Calories	260	Calories from Fat	240
		% Daily Value*	
Total Fat	27g		41%
Saturated Fat	12g		59%
Trans Fat	0g		
Cholesterol	0mg		0%
Sodium	170mg		7%
Total Carbohydrate	50g		17%
Dietary Fiber	2g		6%
Sugars	16g		
Protein	7g		
Vitamin A	0%	Vitamin C	0%
Calcium	2%	Iron	4%
* Percent Daily Values are based on a 2,000 calorie diet. Your daily values may be higher or lower depending on your calorie needs.			
	Calories	2,000	2,500
Total Fat	Less than	65g	80g
Sat Fat	Less than	20g	25g
Cholesterol	Less than	300mg	300mg
Sodium	Less than	2,400mg	2,400mg
Total Carbohydrate		300g	375g
Dietary Fiber		25g	30g
Calories per gram			
	Fat	9	Carbohydrates 4 • Protein 4

Case UPC



Case Label

CS PBJ SANDWICH	
<p>INGREDIENTS: UN-ENRICHED WHEAT FLOUR, SHORTENING (palm oil), SUGAR, EGGS, PEANUT BUTTER(roasted peanuts, salt), RASPBERRY JAM (raspberries, sugar, corn syrup, pectin, citric acid & sodium citrate) CHOCOLATE COATING(sugar, vegetable shortening(blend of partially hydrogenated soybean & coconut oils, hydrogenated cottonseed and/or palm oils. Cocoa(alkali processed), sorbitan monostearate, natural & artificial flavors, polysorbate 60, salt.) SALT, FLAVORS (F D & C YELLOW #5 & #6)</p>	
<p>Contains: Wheat, Eggs, Peanuts, Soy</p>	
<p>NET WT 10 LBS - REF # 1720</p>	
<p>MANUFACTURED BY: LA ROSA BAKERY INC. SHREWSBURY NJ 07702</p>	



Product Specification

Raspberry Linzer Tart Tray, Item 1810



Ingredients: UN-ENRICHED WHEAT FLOUR, SHORTENING (palm oil), SUGAR, RASPBERRY JAM (raspberries, sugar, corn syrup, pectin, citric acid, sodium citrate), EGGS, SALT, FLAVORS, (F D & C YELLOW #5 & #6).

Net Case Weight	10.5 lbs.
Gross Case Wt.	13 lbs.
Inner Case Pack	12/14 oz. Trays
Shelf Life	90 Days
Case Dimensions	17.75 X 15.5 X 5.88
Case Cube	0.94
Storage	Dry
Lead Time	2 Weeks
Pallet tie/high	6/10

Lot Code Explanation (Julian Date): The first number of the Julian Date represents the year. The last three numbers represent the day of manufacture. Ie: **5101** means it was manufactured in 2015 on the **101st** day.

Allergens: Wheat, eggs.

Kosher Status : No

Country of Origin: United States of America

Allergen warning: This product was made in a facility that may also use common food allergens including milk, peanuts, tree nuts, eggs and soybean.

GMO Status: Based on information provided to us by our vendors, we cannot guarantee that this item is genetically modified organism (GMO) free.

MSDS: All items manufactured by La Rosa Bakery Inc. contains ingredients which are on the GRAS (generally recognized as safe) list. These food items do not require a MSDS (material safety data sheet) and are made in compliance with the United States of America Food, Drug and Cosmetic Act.

Certificate of Manufacture: La Rosa Bakery, Inc. certifies that all products are prepared, processed and packaged in a facility inspected by the Food and Drug Administration as well as a Third Party Auditor and applicable state or local health agencies in the United States of America, using only ingredients and packaging that are approved for food use.

Nutrition Facts

Serving Size 2 oz (57g)
Servings per Container 1

Amount per Serving

Calories 250 Calories from Fat 120

% Daily Value*

Total Fat 13g 20 %

Saturated Fat 3.5g 16 %

Trans Fat 0g

Cholesterol 0mg 0 %

Sodium 80mg 3 %

Total Carbohydrate 32g 11 %

Dietary Fiber 1g 3 %

Sugars 13g

Protein 3g

Vitamin A 0% • Vitamin C 0%

Calcium 0% • Iron 2%

* Percent Daily Values are based on a 2,000 calorie diet. Your daily values may be higher or lower depending on your calorie needs.

	Calories	2,000	2,500
Total Fat	Less than	65g	80g
Sat Fat	Less than	20g	25g
Cholesterol	Less than	300mg	300mg
Sodium	Less than	2,400mg	2,400mg
Total Carbohydrate		300g	375g
Dietary Fiber		25g	30g

Calories per gram

Fat 9 • Carbohydrates 4 • Protein 4

Case UPC



Case Label

SM RASPBERRY LINZER TART

INGREDIENTS: UN-ENRICHED WHEAT FLOUR, PATRIALLY HYDROGENATED VEGETABLE OIL(soybean and palm oil), SUGAR, RASPBERRY JAM (raspberries, sugar, corn syrup, pectin, citric acid, sodium citrate), EGGS, SALT, FLAVORS, (F D & C YELLOW #5 & #6)

Contains: Wheat, soy, eggs.

12 - 14 oz Trays
NET WT 10.5 LBS REF # 1810
MANUFACTURED BY: LA ROSA BAKERY, INC.
SHREWSBURY, NJ 07702





Product Specification

Raspberry Sandwich Cookie Tray, Item 1814



Net Case Weight	10.5 lbs.
Gross Case Wt.	13 lbs.
Inner Case Pack	12/14 oz. Trays
Shelf Life	90 Days
Case Dimensions	17.75 X 15.5 X 5.88
Case Cube	0.94
Storage	Dry
Lead Time	2 Weeks
Pallet tie/high	6/10

INGREDIENTS: ENRICHED WHEAT FLOUR (bleached wheat flour, malted barley flour, niacin, reduced iron, potassium bromate, thiamine mononitrate, riboflavin, folic acid) , SUGAR, SHORTENING (palm oil), RASPBERRY JAM (raspberries, sugar, corn syrup, pectin, citric acid and sodium citrate). EGGS, CHOCOLATE COATING (sugar, vegetable shortening (blend of partially hydrogenated soybean & coconut oils, hydrogenated cottonseed and/or palm oils. Cocoa (alkali processed), sorbitan monostearate, natural & artificial flavors, polysorbate 60, salt.) RED SPRINKLES (corn starch, soya lecithin, gum arabic), BAKING POWDER, SALT, FLAVORS, (F D & C YELLOW #5 & #6, RED# 40).

Lot Code Explanation (Julian Date): The first number of the Julian Date represents the year. The last three numbers represent the day of manufacture. Ie: **5101** means it was manufactured in 2015 on the **101st** day.

Allergens: Wheat, eggs, soy.

Kosher Status : No

Country of Origin: United States of America

Allergen warning: This product was made in a facility that may also use common food allergens including milk, peanuts, tree nuts, eggs and soybean.

GMO Status: Based on information provided to us by our vendors, we cannot guarantee that this item is genetically modified organism (GMO) free.

MSDS: All items manufactured by La Rosa Bakery Inc. contains ingredients which are on the GRAS (generally recognized as safe) list. These food items do not require a MSDS (material safety data sheet) and are made in compliance with the United States of America Food, Drug and Cosmetic Act.

Certificate of Manufacture: La Rosa Bakery, Inc. certifies that all products are prepared, processed and packaged in a facility inspected by the Food and Drug Administration as well as a Third Party Auditor and applicable state or local health agencies in the United States of America, using only ingredients and packaging that are approved for food use.

Nutrition Facts	
Serving Size 2 oz (57g)	
Amount Per Serving	
Calories 130	Calories from Fat 100
% Daily Value*	
Total Fat 11g	17 %
Saturated Fat 5g	25 %
Trans Fat 0.5g	
Cholesterol 0mg	0 %
Sodium 55mg	2 %
Total Carbohydrate 29g	10 %
Dietary Fiber 1g	2 %
Sugars 16g	
Protein 2g	
Vitamin A 0%	Vitamin C 2%
Calcium 2%	Iron 4%
* Percent Daily Values are based on a 2,000 calorie diet. Your daily values may be higher or lower depending on your calorie needs.	
	Calories 2,000 2,500
Total Fat	Less than 65 g 80 g
Sat Fat	Less than 20 g 25 g
Cholesterol	Less than 300 mg 300 mg
Sodium	Less than 2,400 mg 2,400 mg
Total Carbohydrate	300 g 375 g
Dietary Fiber	25 g 30 g
Calories per gram:	
Fat 9	Carbohydrate 4 Protein 4

Case UPC



Case Label

RASPBERRY SANDWICH COOKIES	
<p>INGREDIENTS: ENRICHED WHEAT FLOUR (bleached wheat flour, malted barley flour, niacin, reduced iron, potassium bromate, thiamine mononitrate, riboflavin, folic acid) , SUGAR, SHORTENING (palm oil), RASPBERRY JAM (raspberries, sugar, corn syrup, pectin, citric acid and sodium citrate). EGGS, CHOCOLATE COATING (sugar, vegetable shortening (blend of partially hydrogenated soybean & coconut oils, hydrogenated cottonseed and/or palm oils. Cocoa (alkali processed), sorbitan monostearate, natural & artificial flavors, polysorbate 60, salt.) RED SPRINKLES (corn starch, soya lecithin, gum arabic), BAKING POWDER, SALT, FLAVORS, (F D & C YELLOW #5 & #6, RED# 40).</p>	
Contains: Wheat, eggs, soy.	
12 - 14 oz. Trays	
NET WT 10.5 LBS REF# 1814	
Manufactured by: La Rosa Bakery, Inc.	
Shrewsbury, NJ 07702	



Product Specification

Red and Green Dip Cookie Tray, Item 1850



Net Case Weight	10.5 lbs.
Gross Case Wt.	13 lbs.
Inner Case Pack	12/14 oz. Trays
Shelf Life	90 Days
Case Dimensions	17.75 X 15.5 X 5.875
Case Cube	0.94
Storage	Dry
Lead Time	2 Weeks
Pallet tie/high	6/10

Ingredients: ENRICHED WHEAT FLOUR (bleached wheat flour, malted barley flour, niacin, reduced iron, potassium bromate, thiamine mononitrate, riboflavin, folic acid), SHORTENING (palm oil), SUGAR, EGGS, RED SPRINKLES (corn starch, soya lecithin, gum arabic), GREEN SPRINKLES (corn starch, soya lecithin, gum arabic), CHOCOLATE COATING (sugar, vegetable shortening (blend of partially hydrogenated soybean & coconut oils, hydrogenated cottonseed and/or palm oils. Cocoa (alkali processed), sorbitan monostearate, natural & artificial flavors, polysorbate 60, salt.), BAKING POWDER, SALT, FLAVORS, (F D & C YELLOW #5 & #6, BLUE #1, RED #40, RED #3(ERYTHOSINE).

Lot Code Explanation (Julian Date): The first number of the Julian Date represents the last number of the year. The next three numbers represent the day of manufacture. I.e.: **5101** means it was manufactured in **2015** on the **101**st day.

Allergens: Wheat, eggs, soy.

Kosher Status : No

Country of Origin: United States of America

Allergen warning: This product was made in a facility that may also use common food allergens including milk, peanuts, tree nuts, eggs and soybean.

GMO Status: Based on information provided to us by our vendors, we cannot guarantee that this item is genetically modified organism (GMO) free.

MSDS: All items manufactured by La Rosa Bakery Inc. contains ingredients which are on the GRAS (generally recognized as safe) list. These food items do not require a MSDS (material safety data sheet) and are made in compliance with the United States of America Food, Drug and Cosmetic Act.

Certificate of Manufacture: La Rosa Bakery, Inc. certifies that all products are prepared, processed and packaged in a facility inspected by the Food and Drug Administration as well as a Third Party Auditor and applicable state or local health agencies in the United States of America, using only ingredients and packaging that are approved for food use.

Nutrition Facts	
Serving Size 2 oz (57g)	
Servings per Container 7	
Amount per Serving	
Calories 220	Calories from Fat 100
% Daily Value*	
Total Fat 11g	17 %
Saturated Fat 4g	21 %
Trans Fat 0g	
Cholesterol 0mg	0 %
Sodium 55mg	2 %
Total Carbohydrate 30g	10 %
Dietary Fiber 0g	0 %
Sugars 20g	
Protein 2g	
Vitamin A 0 %	Vitamin C 0 %
Calcium 0 %	Iron 4 %
* Percent Daily Values are based on a 2,000 calorie diet. Your daily values may be higher or lower depending on your calorie needs.	
	Calories 2,000 2,500
Total Fat	Less than 65g 80g
Sat Fat	Less than 20g 25g
Cholesterol	Less than 300mg 300mg
Sodium	Less than 2,400mg 2,400mg
Total Carbohydrate	300g 375g
Dietary Fiber	25g 30g
Calories per gram	
Fat 9	Carbohydrates 4 Protein 4

Case UPC



Case Label

RED & GREEN DIP COOKIES <small>INGREDIENTS: ENRICHED WHEAT FLOUR (bleached wheat flour, malted barley flour, niacin, reduced iron, potassium bromate, thiamine mononitrate, riboflavin, folic acid), SHORTENING (palm oil), SUGAR, EGGS, RED SPRINKLES (corn starch, soya lecithin, gum arabic), GREEN SPRINKLES (corn starch, soya lecithin, gum arabic), CHOCOLATE COATING (sugar, vegetable shortening (blend of partially hydrogenated soybean & coconut oils, hydrogenated cottonseed and/or palm oils. Cocoa (alkali processed), sorbitan monostearate, natural & artificial flavors, polysorbate 60, salt.), BAKING POWDER, SALT, FLAVORS, (F D & C YELLOW #5 & #6, BLUE #1, RED #40, RED #3(ERYTHOSINE).</small>	
<small>Contains: Wheat, eggs, soy.</small>	
12-14 OZ TRAYS NET WT 10.5 LBS REF# 1850 MANUFACTURED BY: LA ROSA BAKERY, INC. SHREWSBURY, NJ 07702	



Product Specification

Red and Green Dip Cookies, Item 1708

Ingredients: ENRICHED WHEAT FLOUR (bleached wheat flour, malted barley flour, niacin, reduced iron, potassium bromate, thiamine mononitrate, riboflavin, folic acid), SHORTENING (palm oil), SUGAR, EGGS, RED SPRINKLES (corn starch, soya lecithin, gum arabic), GREEN SPRINKLES (corn starch, soya lecithin, gum arabic), CHOCOLATE COATING (sugar, vegetable shortening (blend of partially hydrogenated soybean & coconut oils, hydrogenated cottonseed and/or palm oils. Cocoa (alkali processed), sorbitan monostearate, natural & artificial flavors, polysorbate 60, salt.), BAKING POWDER, SALT, FLAVORS, (F D & C YELLOW #5 & #6, BLUE #1, RED #40, RED #3(ERYTHOSINE).

Net Case Weight	10 lbs.
Gross Case Wt.	11 lbs.
Inner Case Pack	2/5 lbs. trays
Shelf Life	10-12 weeks
Case Dimensions	17.75 x 15.5 x 5.1875
Case Cube	0.83
Storage	Cool
Lead Time	2 weeks
Pallet tie/high	6/10

Lot Code Explanation (Julian Date): The first number of the Julian Date represents the last number of the year. The next three numbers represent the day of manufacture. I.e.: **5101** means it was manufactured in 20**15** on the **101**st day.

Allergens: Wheat, eggs, soy.

Kosher Status : No

Country of Origin: United States of America

Allergen warning: This product was made in a facility that may also use common food allergens including milk, peanuts, tree nuts, eggs and soybean.

GMO Status: Based on information provided to us by our vendors, we cannot guarantee that this item is genetically modified organism (GMO) free.

MSDS: All items manufactured by La Rosa Bakery Inc. contains ingredients which are on the GRAS (generally recognized as safe) list. These food items do not require a MSDS (material safety data sheet) and are made in compliance with the United States of America Food, Drug and Cosmetic Act.

Certificate of Manufacture: La Rosa Bakery, Inc. certifies that all products are prepared, processed and packaged in a facility inspected by the Food and Drug Administration as well as a Third Party Auditor and applicable state or local health agencies in the United States of America, using only ingredients and packaging that are approved for food use.

Nutrition Facts	
Serving Size 2 oz (57g)	
Servings per Container	
Amount per Serving	
Calories 220	Calories from Fat 100
% Daily Value*	
Total Fat 11g	17 %
Saturated Fat 4g	21 %
Trans Fat 0g	
Cholesterol 0mg	0 %
Sodium 55mg	2 %
Total Carbohydrate 30g	10 %
Dietary Fiber 0g	0 %
Sugars 20g	
Protein 2g	
Vitamin A 0 %	Vitamin C 0 %
Calcium 0 %	Iron 4 %
* Percent Daily Values are based on a 2,000 calorie diet. Your daily values may be higher or lower depending on your calorie needs.	
	Calories 2,000 2,500
Total Fat	Less than 65g 80g
Sat Fat	Less than 20g 25g
Cholesterol	Less than 300mg 300mg
Sodium	Less than 2,400mg 2,400mg
Total Carbohydrate	300g 375g
Dietary Fiber	25g 30g
Calories per gram	
Fat 9 • Carbohydrates 4 • Protein 4	

Case UPC



Case Label

RED & GREEN DIP COOKIES

INGREDIENTS: ENRICHED WHEAT FLOUR (bleached wheat flour, malted barley flour, niacin, reduced iron, potassium bromate, thiamine mononitrate, riboflavin, folic acid), SHORTENING (palm oil), SUGAR, EGGS, RED SPRINKLES (corn starch, soya lecithin, gum arabic), GREEN SPRINKLES (corn starch, soya lecithin, gum arabic), CHOCOLATE COATING (sugar, vegetable shortening (blend of partially hydrogenated soybean & coconut oils, hydrogenated cottonseed and/or palm oils. Cocoa (alkali processed), sorbitan monostearate, natural & artificial flavors, polysorbate 60, salt.), BAKING POWDER, SALT, FLAVORS, (F D & C YELLOW #5 & #6, BLUE #1, RED #40, RED #3(ERYTHOSINE).

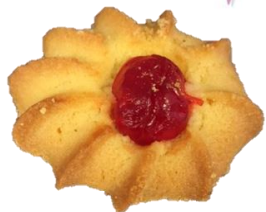
Contains: Wheat, eggs, soy.

NET WT. 10 LBS. REF # 1708
MANUFACTURED BY: LA ROSA BAKERY, INC.
SHREWSBURY, NJ 07702



Product Specification

Red Cherry Cookie, Item 1718



Net Case Weight	10 lbs.
Gross Case Wt.	11 lbs.
Inner Case Pack	2/5 lb. Trays
Shelf Life	10-12 Weeks
Case Dimensions	17.75 X 15.5 X 5.187
Case Cube	0.83
Storage	Cool
Lead Time	2 Weeks
Pallet tie/high	6/10

Ingredients: ENRICHED WHEAT FLOUR (bleached wheat flour, malted barley flour, niacin, reduced iron, potassium bromate, thiamine mononitrate, riboflavin, folic acid), SHORTENING (palm oil), SUGAR, EGGS, BAKING POWDER, SALT, FLAVORS, RED CHERRIES, (F D & C YELLOW #5, #6 RED #40).

Lot Code Explanation (Julian Date): The first number of the Julian Date represents the last number of the year. The next three numbers represent the day of manufacture. Ie: **5101** means it was manufactured in **2015** on the **101**st day.

Allergens: Wheat, eggs.

Kosher Status : No

Country of Origin: United States of America

Allergen warning: This product was made in a facility that may also use common food allergens including milk, peanuts, tree nuts, eggs and soybean.

GMO Status: Based on information provided to us by our vendors, we cannot guarantee that this item is genetically modified organism (GMO) free.

MSDS: All items manufactured by La Rosa Bakery Inc. contains ingredients which are on the GRAS (generally recognized as safe) list. These food items do not require a MSDS (material safety data sheet) and are made in compliance with the United States of America Food, Drug and Cosmetic Act.

Certificate of Manufacture: La Rosa Bakery, Inc. certifies that all products are prepared, processed and packaged in a facility inspected by the Food and Drug Administration as well as a Third Party Auditor and applicable state or local health agencies in the United States of America, using only ingredients and packaging that are approved for food use.

Nutrition Facts	
Serving Size 2 oz (57g)	
Servings per Container	
Amount per Serving	
Calories 190	Calories from Fat 200
% Daily Value*	
Total Fat 22g	34%
Saturated Fat 11g	54%
Trans Fat 0g	
Cholesterol 0mg	0%
Sodium 110mg	5%
Total Carbohydrate 42g	14%
Dietary Fiber 1g	4%
Sugars 15g	
Protein 5g	
Vitamin A 0%	Vitamin C 0%
Calcium 2%	Iron 8%
* Percent Daily Values are based on a 2,000 calorie diet. Your daily values may be higher or lower depending on your calorie needs.	
	Calories 2,000 2,500
Total Fat	Less than 65g 80g
Sat Fat	Less than 20g 25g
Cholesterol	Less than 300mg 300mg
Sodium	Less than 2,400mg 2,400mg
Total Carbohydrate	300g 375g
Dietary Fiber	25g 30g
Calories per gram	
Fat 9 • Carbohydrates 4 • Protein 4	

Case UPC



Case Label

RED CHERRY COOKIE	
INGREDIENTS: ENRICHED WHEAT FLOUR (bleached wheat flour, malted barley flour, niacin, reduced iron, potassium bromate, thiamine mononitrate, riboflavin, folic acid), SHORTENING (palm oil), SUGAR, EGGS, BAKING POWDER, SALT, FLAVORS, RED CHERRIES, (F D & C YELLOW #5, #6 RED #40)	
Contains: Wheat, Eggs	
NET WT 10 LBS REF # 1718	
MANUFACTURED BY: LA ROSA BAKERY, INC. SHREWSBURY, NJ 07702	



Product Specification

Red Dip Cookie, Item 1704



Net Case Weight	10 Lbs.
Gross Case Wt.	11 Lbs.
Inner Case Pack	2/5 Lb. trays
Shelf Life	10-12 Weeks
Case Dimensions	17.75 X 15.5 X 5.1875
Case Cube	0.83
Storage	Cool
Lead Time	2 Weeks
Pallet tie/high	6/10

Ingredients: ENRICHED WHEAT FLOUR (bleached wheat flour, malted barley flour, niacin, reduced iron, potassium bromate, thiamine mononitrate, riboflavin, folic acid), SHORTENING (palm oil), SUGAR, EGGS, RED SPRINKLES (corn starch, soya lecithin, gum arabic), CHOCOLATE COATING (sugar, vegetable shortening (blend of partially hydrogenated soybean & coconut oils, hydrogenated cottonseed and/or palm oils. Cocoa (alkali processed), sorbitan monosterate, natural & artificial flavors, polysorbate 60, salt.), BAKING POWDER, SALT, FLAVORS, (F D & C YELLOW #5 & #6, RED #40, RED #3 (ERYTHOSINE).

Lot Code Explanation (Julian Date): The first number of the Julian Date represents the year. The next three numbers represent the day of manufacture. Ie: **5101** means it was manufactured in 2015 on the **101st** day.

Allergens: Wheat, eggs, soy.

Kosher Status : No

Country of Origin: United States of America

Allergen warning: This product was made in a facility that may also use common food allergens including milk, peanuts, tree nuts, eggs and soybean.

GMO Status: Based on information provided to us by our vendors, we cannot guarantee that this item is genetically modified organism (GMO) free.

MSDS: All items manufactured by La Rosa Bakery Inc. contains ingredients which are on the GRAS (generally recognized as safe) list. These food items do not require a MSDS (material safety data sheet) and are made in compliance with the United States of America Food, Drug and Cosmetic Act.

Certificate of Manufacture: La Rosa Bakery, Inc. certifies that all products are prepared, processed and packaged in a facility inspected by the Food and Drug Administration as well as a Third Party Auditor and applicable state or local health agencies in the United States of America, using only ingredients and packaging that are approved for food use.

Nutrition Facts

Serving Size 2 oz (57g)
Servings per Container 7

Amount per Serving

Calories 220 **Calories from Fat** 100

% Daily Value*

Total Fat 11g **17 %**

Saturated Fat 4g **21 %**

Trans Fat 0g

Cholesterol 0mg **0 %**

Sodium 55mg **2 %**

Total Carbohydrate 30g **10 %**

Dietary Fiber 0g **0 %**

Sugars 20g

Protein 2g

Vitamin A 0% • Vitamin C 0%

Calcium 0% • Iron 4%

* Percent Daily Values are based on a 2,000 calorie diet. Your daily values may be higher or lower depending on your calorie needs.

	Calories	2,000	2,500
--	----------	-------	-------

Total Fat	Less than	65g	80g
-----------	-----------	-----	-----

Sat Fat	Less than	20g	25g
---------	-----------	-----	-----

Cholesterol	Less than	300mg	300mg
-------------	-----------	-------	-------

Sodium	Less than	2,400mg	2,400mg
--------	-----------	---------	---------

Total Carbohydrate		300g	375g
--------------------	--	------	------

Dietary Fiber		25g	30g
---------------	--	-----	-----

Calories per gram

Fat 9 • Carbohydrates 4 • Protein 4

Case UPC



Case Label

RED DIP COOKIES

INGREDIENTS: ENRICHED WHEAT FLOUR (bleached wheat flour, malted barley flour, niacin, reduced iron, potassium bromate, thiamine mononitrate, riboflavin, folic acid), SHORTENING (palm oil), SUGAR, EGGS, RED SPRINKLES (corn starch, soya lecithin, gum arabic), CHOCOLATE COATING (sugar, vegetable shortening (blend of partially hydrogenated soybean & coconut oils, hydrogenated cottonseed and/or palm oils. Cocoa (alkali processed), sorbitan monosterate, natural & artificial flavors, polysorbate 60, salt.), BAKING POWDER, SALT, FLAVORS, (F D & C YELLOW #5 & #6, RED #40, RED #3 (ERYTHOSINE)

CONTAINS: Wheat, Eggs, Soy.

NET WT. 10 LBS. REF # 1704
MANUFACTURED BY: LA ROSA BAKERY, INC.
SHREWSBURY, NJ 07702



Product Specification

S Cookie Tray, Item 1831



Ingredients: UN-ENRICHED WHEAT FLOUR, SUGAR, SHORTENING (palm oil), SUGAR, EGGS, WATER, HONEY, AMONIA, SALT, AND FLAVORS, F D & C YELLOW #5 & #6.

Net Case Weight	7.5 lbs.
Gross Case Wt.	8.5 lbs.
Inner Case Pack	12/10 oz. Trays
Shelf Life	90 Days
Case Dimensions	17.75 X 15.5 X 5.88
Case Cube	0.94
Storage	Dry
Lead Time	2 Weeks
Pallet tie/high	6/10

Lot Code Explanation (Julian Date): The first number of the Julian Date represents the last number of the year. The next three numbers represent the day of manufacture. Ie: **5101** means it was manufactured in 20**15** on the **101**st day.

Allergens: Wheat, eggs.

Kosher Status : No

Country of Origin: United States of America

Allergen warning: This product was made in a facility that may also use common food allergens including milk, peanuts, tree nuts, eggs and soybean.

GMO Status: Based on information provided to us by our vendors, we cannot guarantee that this item is genetically modified organism (GMO) free.

MSDS: All items manufactured by La Rosa Bakery Inc. contains ingredients which are on the GRAS (generally recognized as safe) list. These food items do not require a MSDS (material safety data sheet) and are made in compliance with the United States of America Food, Drug and Cosmetic Act.

Certificate of Manufacture: La Rosa Bakery, Inc. certifies that all products are prepared, processed and packaged in a facility inspected by the Food and Drug Administration as well as a Third Party Auditor and applicable state or local health agencies in the United States of America, using only ingredients and packaging that are approved for food use.

Nutrition Facts	
Serving Size 2 oz (57g)	
Servings per Container 5	
Amount per Serving	
Calories 140	Calories from Fat 100
% Daily Value*	
Total Fat 11g	17%
Saturated Fat 5g	27%
Trans Fat 0g	
Cholesterol 0mg	0%
Sodium 360mg	15%
Total Carbohydrate 31g	10%
Dietary Fiber 1g	3%
Sugars 10g	
Protein 3g	
Vitamin A 0%	Vitamin C 0%
Calcium 0%	Iron 2%
* Percent Daily Values are based on a 2,000 calorie diet. Your daily values may be higher or lower depending on your calorie needs.	
	Calories 2,000 2,500
Total Fat	Less than 65g 80g
Sat Fat	Less than 20g 25g
Cholesterol	Less than 300mg 300mg
Sodium	Less than 2,400mg 2,400mg
Total Carbohydrate	300g 375g
Dietary Fiber	25g 30g
Calories per gram	
Fat	9 • Carbohydrates 4 • Protein 4

Case UPC



Case Label

S COOKIES	
INGREDIENTS: UN-ENRICHED WHEAT FLOUR, SUGAR, SHORTENING (palm oil), SUGAR, EGGS, WATER, HONEY, AMONIA, SALT, AND FLAVORS, F D & C YELLOW #5 & #6	
Contains: Wheat, eggs.	
12-10 OZ TRAYS NET WT 7.5 LBS REF# 1831	
MANUFACTURED BY: LA ROSA BAKERY, INC. SHREWSBURY, NJ 07702	



Product Specification

Seeded Cookie Tray, Item 1827

Ingredients: UN-ENRICHED WHEAT FLOUR, SUGAR, SHORTENING (palm oil), SUGAR, SESAME SEEDS, EGGS, WATER, HONEY, AMONIA, SALT, FLAVORS (F D & C YELLOW #5 & #6).

Lot Code Explanation (Julian Date): The first number of the Julian Date represents the last number of the year. The next three numbers represent the day of manufacture. Ie: **5101** means it was manufactured in 2015 on the 101st day.

Allergens: Wheat, eggs.

Kosher Status : No

Country of Origin: United States of America

Allergen warning: This product was made in a facility that may also use common food allergens including milk, peanuts, tree nuts, eggs and soybean.

GMO Status: Based on information provided to us by our vendors, we cannot guarantee that this item is genetically modified organism (GMO) free.

MSDS: All items manufactured by La Rosa Bakery Inc. contains ingredients which are on the GRAS (generally recognized as safe) list. These food items do not require a MSDS (material safety data sheet) and are made in compliance with the United States of America Food, Drug and Cosmetic Act.

Certificate of Manufacture: La Rosa Bakery, Inc. certifies that all products are prepared, processed and packaged in a facility inspected by the Food and Drug Administration as well as a Third Party Auditor and applicable state or local health agencies in the United States of America, using only ingredients and packaging that are approved for food use.

Net Case Weight	7.5 lbs.
Gross Case Wt.	8.5 lbs.
Inner Case Pack	12/10 oz. Trays
Shelf Life	90 Days
Case Dimensions	17.75 X 15.5 X 5.88
Case Cube	0.94
Storage	Dry
Lead Time	2 Weeks
Pallet tie/high	6/10

Nutrition Facts

Serving Size 2 oz (57g)
Servings per Container 5

Amount per Serving

Calories 180 **Calories from Fat** 130

% Daily Value*

Total Fat 15g **22%**

Saturated Fat 5g **25%**

Trans Fat 0g

Cholesterol 0mg **0%**

Sodium 290mg **12%**

Total Carbohydrate 27g **9%**

Dietary Fiber 2g **8%**

Sugars 8g

Protein 5g

Vitamin A **0%** • Vitamin C **0%**

Calcium **10%** • Iron **10%**

* Percent Daily Values are based on a 2,000 calorie diet. Your daily values may be higher or lower depending on your calorie needs.

	Calories	2,000	2,500
Total Fat	Less than	65g	80g
Sat Fat	Less than	20g	25g
Cholesterol	Less than	300mg	300mg
Sodium	Less than	2,400mg	2,400mg
Total Carbohydrate		300g	375g
Dietary Fiber		25g	30g

Calories per gram

Fat 9 • Carbohydrates 4 • Protein 4

Case UPC




Case Label

SEEDED COOKIES

INGREDIENTS: UN-ENRICHED WHEAT FLOUR, SUGAR, SHORTENING (palm oil), SUGAR, SESAME SEEDS, EGGS, WATER, HONEY, AMONIA, SALT, FLAVORS (F D & C YELLOW #5 & #6).

Contains: Wheat, eggs.

12-10 OZ TRAYS
NET WT 7.5 LBS REF# 1827
MANUFACTURED BY: LA ROSA BAKERY, INC.
SHREWSBURY, NJ 07702





Product Specification

Seven Layer Cookie Tray Item 1830



Net Case Weight	12 lbs.
Gross Case Wt.	14.5 lbs.
Inner Case Pack	12/1 lb Trays
Shelf Life	6 Months
Case Dimensions	17.75 X 15.5 X 5.875
Case Cube	0.94
Storage	Frozen
Lead Time	2 Weeks
Pallet tie/high	6/10

Ingredients: ENRICHED WHEAT ENRICHED (bleached wheat flour, malted barley flour, niacin, reduced iron, potassium bromate, thiamine mononitrate, riboflavin, folic acid), SUGAR, SHORTENING (palm oil, mono and diglycerides, polysorbate 60), PINEAPPLE ORANGE JAM (sugar, corn syrup, pineapple, high fructose corn syrup, orange peel, water, citric acid, pectin, locust bean gum, potassium sorbate as a preservative, sodium citrate, artificial flavor F D & C Yellow #6, caramel color, CHOCOLATE COATING (sugar, vegetable shortening (blend of partially hydrogenated soybean & coconut oils, hydrogenated cottonseed and/or palm oils. Cocoa (alkali processed), sorbitan monostearate, natural & artificial flavors, polysorbate 60, salt.), NATURAL AND ARTIFICIAL FLAVORS, (F D & C YELLOW #3, #5 & #6, F D & C RED #3 & #40, BLUE #1)

Lot Code Explanation (Julian Date): The first number of the Julian Date represents the year. The last three numbers represent the day of manufacture.

Allergens: Wheat, soy.

Kosher Status : No

Country of Origin: United States of America

Allergen warning: This product was made in a facility that may also use common food allergens including milk, peanuts, tree nuts, eggs and soybean.

GMO Status: Based on information provided to us by our vendors, we cannot guarantee that this item is genetically modified organism (GMO) free.

MSDS: All items manufactured by La Rosa Bakery Inc. contains ingredients which are on the GRAS (generally recognized as safe) list. These food items do not require a MSDS (material safety data sheet) and are made in compliance with the United States of America Food, Drug and Cosmetic Act.

Certificate of Manufacture: La Rosa Bakery, Inc. certifies that all products are prepared, processed and packaged in a facility inspected by the Food and Drug Administration as well as a Third Party Auditor and applicable state or local health agencies in the United States of America, using only ingredients and packaging that are approved for food use.

Nutrition Facts	
Serving Size 2 oz (57g)	
Servings per Container 8	
Amount per Serving	
Calories 250	Calories from Fat 130
% Daily Value*	
Total Fat 15g	23%
Saturated Fat 4.5g	21%
Trans Fat 0g	
Cholesterol 0mg	0%
Sodium 30mg	1%
Total Carbohydrate 28g	9%
Dietary Fiber 1g	2%
Sugars 19g	
Protein 2g	
Vitamin A 2%	Vitamin C 2%
Calcium 0%	Iron 4%
* Percent Daily Values are based on a 2,000 calorie diet. Your daily values may be higher or lower depending on your calorie needs.	
	Calories 2,000 2,500
Total Fat	Less than 65g 80g
Sat Fat	Less than 20g 25g
Cholesterol	Less than 300mg 300mg
Sodium	Less than 2,400mg 2,400mg
Total Carbohydrate	300g 375g
Dietary Fiber	25g 30g
Calories per gram	
Fat 9 • Carbohydrates 4 • Protein 4	

Case UPC



Case Label

SEVEN LAYER COOKIES

INGREDIENTS: ENRICHED WHEAT ENRICHED (BLEACHED WHEAT FLOUR, MALTED BARLEY FLOUR, NIACIN, REDUCED IRON, POTASSIUM BROMATE, THIAMINE MONONITRATE, RIBOFLAVIN, FOLIC ACID), SUGAR, SHORTENING (PALM OIL, MONO AND DIGLYCERIDES, POLYSORBATE 60), PINEAPPLE ORANGE JAM (SUGAR, CORN SYRUP, PINEAPPLE, HIGH FRUCTOSE CORN SYRUP, ORANGE PEEL, WATER, CITRIC ACID, PECTIN, LOCUST BEAN GUM, POTASSIUM SORBATE AS A PRESERVATIVE, SODIUM CITRATE, ARTIFICIAL FLAVOR F D & C YELLOW #6, CARAMEL COLOR, CHOCOLATE COATING (SUGAR, VEGETABLE SHORTENING (BLEND OF PARTIALLY HYDROGENATED SOYBEAN & COCONUT OILS, HYDROGENATED COTTONSEED AND/OR PALM OILS. COCOA (ALKALI PROCESSED), SORBITAN MONOSTEARATE, NATURAL & ARTIFICIAL FLAVORS, POLYSORBATE 60, SALT.), NATURAL AND ARTIFICIAL FLAVORS, (F D & C YELLOW #3, #5 & #6, F D & C RED #3 & #40, BLUE #1)

12 - 1LB TRAYS PER CASE
NET WT 12 LBS - REF # 1830
 MANUFACTURED BY: LA ROSA BAKERY, INC.
 SHREWSBURY, NJ 07702



Product Specification

Seven Layer Cookie Tray, Item 1841



Net Case Weight	9 lbs.
Gross Case Wt.	10 lbs.
Inner Case Pack	12/12 oz. Trays
Shelf Life	6 Months
Case Dimensions	17.75 X 15.5 X 5.875
Case Cube	0.83
Storage	Frozen
Lead Time	2 Weeks
Pallet tie/high	6/10

Ingredients: ENRICHED WHEAT ENRICHED (bleached wheat flour, malted barley flour, niacin, reduced iron, potassium bromate, thiamine mononitrate, riboflavin, folic acid), SUGAR, SHORTENING (palm oil, mono and diglycerides, polysorbate 60), PINEAPPLE ORANGE JAM (sugar, corn syrup, pineapple, high fructose corn syrup, orange peel, water, citric acid, pectin, locust bean gum, potassium sorbate as a preservative, sodium citrate, artificial flavor F D & C Yellow #6, caramel color, CHOCOLATE COATING (sugar, vegetable shortening (blend of partially hydrogenated soybean & coconut oils, hydrogenated cottonseed and/or palm oils. Cocoa (alkali processed), sorbitan monosterate, natural & artificial flavors, polysorbate 60, salt.), NATURAL AND ARTIFICIAL FLAVORS, (F D & C YELLOW #3, #5 & #6, F D & C RED #3 & #40, BLUE #1)

Lot Code Explanation (Julian Date): The first number of the Julian Date represents the year. The last three numbers represent the day of manufacture.

Allergens: Wheat, soy.

Kosher Status : No

Country of Origin: United States of America

Allergen warning: This product was made in a facility that may also use common food allergens including milk, peanuts, tree nuts, eggs and soybean.

GMO Status: Based on information provided to us by our vendors, we cannot guarantee that this item is genetically modified organism (GMO) free.

MSDS: All items manufactured by La Rosa Bakery Inc. contains ingredients which are on the GRAS (generally recognized as safe) list. These food items do not require a MSDS (material safety data sheet) and are made in compliance with the United States of America Food, Drug and Cosmetic Act.

Certificate of Manufacture: La Rosa Bakery, Inc. certifies that all products are prepared, processed and packaged in a facility inspected by the Food and Drug Administration as well as a Third Party Auditor and applicable state or local health agencies in the United States of America, using only ingredients and packaging that are approved for food use.

Nutrition Facts	
Serving Size 2 oz (57g)	
Servings per Container 8	
Amount per Serving	
Calories 250	Calories from Fat 130
% Daily Value*	
Total Fat 15g	23%
Saturated Fat 4.5g	21%
Trans Fat 0g	
Cholesterol 0mg	0%
Sodium 30mg	1%
Total Carbohydrate 28g	9%
Dietary Fiber 1g	2%
Sugars 19g	
Protein 2g	
Vitamin A 2%	Vitamin C 2%
Calcium 0%	Iron 4%
* Percent Daily Values are based on a 2,000 calorie diet. Your daily values may be higher or lower depending on your calorie needs.	
	Calories 2,000 2,500
Total Fat	Less than 65g 80g
Sat Fat	Less than 20g 25g
Cholesterol	Less than 300mg 300mg
Sodium	Less than 2,400mg 2,400mg
Total Carbohydrate	300g 375g
Dietary Fiber	25g 30g
Calories per gram	
Fat 9 • Carbohydrates 4 • Protein 4	

Case UPC



Case Label

LAROSA SEVEN LAYER COOKIES

INGREDIENTS: ENRICHED WHEAT ENRICHED (bleached wheat flour, malted barley flour, niacin, reduced iron, potassium bromate, thiamine mononitrate, riboflavin, folic acid), SUGAR, SHORTENING (palm oil, mono and diglycerides, polysorbate 60), PINEAPPLE ORANGE JAM (sugar, corn syrup, pineapple, high fructose corn syrup, orange peel, water, citric acid, pectin, locust bean gum, potassium sorbate as a preservative, sodium citrate, artificial flavor F D & C Yellow #6, caramel color, CHOCOLATE COATING (sugar, vegetable shortening (blend of partially hydrogenated soybean & coconut oils, hydrogenated cottonseed and/or palm oils. Cocoa (alkali processed), sorbitan monosterate, natural & artificial flavors, polysorbate 60, salt.), NATURAL AND ARTIFICIAL FLAVORS, (F D & C YELLOW #3, #5 & #6, F D & C RED #3 & #40, BLUE #1)

**12 - 12 OZ TRAYS PER CASE
NET WT 9 LBS - REF # 1841**



Product Specification

Seven Layer Cookie, Item 1721



Net Case Weight	10 lbs.
Gross Case Wt.	11 lbs.
Inner Case Pack	2/5 lb. Trays
Shelf Life	10-12 Weeks
Case Dimensions	17.75 X 15.5 X 5.187
Case Cube	0.83
Storage	Cool
Lead Time	2 Weeks
Pallet tie/high	6/10

Ingredients: ENRICHED WHEAT ENRICHED (bleached wheat flour, malted barley flour, niacin, reduced iron, potassium bromate, thiamine mononitrate, riboflavin, folic acid), SUGAR, SHORTENING (palm oil, mono and diglycerides, polysorbate 60), PINEAPPLE ORANGE JAM (sugar, corn syrup, pineapple, high fructose corn syrup, orange peel, water, citric acid, pectin, locust bean gum, potassium sorbate as a preservative, sodium citrate, artificial flavor F D & C Yellow #6, caramel color), CHOCOLATE COATING (sugar, vegetable shortening (blend of partially hydrogenated soybean & coconut oils, hydrogenated cottonseed and/or palm oils. Cocoa (alkali processed), sorbitan monosterate, natural & artificial flavors, polysorbate 60, salt.), NATURAL AND ARTIFICIAL FLAVORS, (F D & C YELLOW #3, #5 & #6, F D & C RED #3 & #40, BLUE #1)

Lot Code Explanation (Julian Date): The first number of the Julian Date represents the last number of the year. The next three numbers represent the day of manufacture. I.e.: **5101** means it was manufactured in **2015** on the **101st** day.

Allergens: Wheat, soy.

Kosher Status : No

Country of Origin: United States of America

Allergen warning: This product was made in a facility that may also use common food allergens including milk, peanuts, tree nuts, eggs and soybean.

GMO Status: Based on information provided to us by our vendors, we cannot guarantee that this item is genetically modified organism (GMO) free.

MSDS: All items manufactured by La Rosa Bakery Inc. contains ingredients which are on the GRAS (generally recognized as safe) list. These food items do not require a MSDS (material safety data sheet) and are made in compliance with the United States of America Food, Drug and Cosmetic Act.

Certificate of Manufacture: La Rosa Bakery, Inc. certifies that all products are prepared, processed and packaged in a facility inspected by the Food and Drug Administration as well as a Third Party Auditor and applicable state or local health agencies in the United States of America, using only ingredients and packaging that are approved for food use.

Nutrition Facts			
Serving Size 2 oz (57g)			
Servings per Container			
Amount per Serving			
Calories	250	Calories from Fat	130
% Daily Value*			
Total Fat	15g		23%
Saturated Fat	4.5g		21%
Trans Fat	0g		
Cholesterol	0mg		0%
Sodium	30mg		1%
Total Carbohydrate	28g		9%
Dietary Fiber	1g		2%
Sugars	19g		
Protein	2g		
Vitamin A	2%	Vitamin C	2%
Calcium	0%	Iron	4%
* Percent Daily Values are based on a 2,000 calorie diet. Your daily values may be higher or lower depending on your calorie needs.			
	Calories	2,000	2,500
Total Fat	Less than	65g	80g
Sat Fat	Less than	20g	25g
Cholesterol	Less than	300mg	300mg
Sodium	Less than	2,400mg	2,400mg
Total Carbohydrate		300g	375g
Dietary Fiber		25g	30g
Calories per gram			
Fat 9 • Carbohydrates 4 • Protein 4			

Case UPC



Case Label

SEVEN LAYER COOKIE

INGREDIENTS: ENRICHED WHEAT ENRICHED (bleached wheat flour, malted barley flour, niacin, reduced iron, potassium bromate, thiamine mononitrate, riboflavin, folic acid), SUGAR, SHORTENING (palm oil, mono and diglycerides, polysorbate 60), PINEAPPLE ORANGE JAM (sugar, corn syrup, pineapple, high fructose corn syrup, orange peel, water, citric acid, pectin, locust bean gum, potassium sorbate as a preservative, sodium citrate, artificial flavor F D & C Yellow #6, caramel color), CHOCOLATE COATING (sugar, vegetable shortening (blend of partially hydrogenated soybean & coconut oils, hydrogenated cottonseed and/or palm oils. Cocoa (alkali processed), sorbitan monosterate, natural & artificial flavors, polysorbate 60, salt.), NATURAL AND ARTIFICIAL FLAVORS, (F D & C YELLOW #3, #5 & #6, F D & C RED #3 & #40, BLUE #1)

Contains: Wheat, soy.

NET WT 10 LBS REF # 1721

MANUFACTURED BY: LA ROSA BAKERY INC.
SHREWSBURY NJ 07702



Product Specification

Small Raspberry Linzer Tart, Item 1716



Ingredients: UN-ENRICHED WHEAT FLOUR, SHORTENING (palm oil), SUGAR, RASPBERRY JAM (raspberries, sugar, corn syrup, pectin, citric acid, sodium citrate), EGGS, SALT, FLAVORS, (F D & C YELLOW #5 & #6)

Net Case Weight	10 Lbs.
Gross Case Wt.	11 Lbs.
Inner Case Pack	2/5 Lb. Trays
Shelf Life	10-12 Weeks
Case Dimensions	17.75 X 15.5 X 5.1875
Case Cube	0.83
Storage	Cool
Lead Time	2 Weeks
Pallet tie/high	6/10

Lot Code Explanation (Julian Date): The first number of the Julian Date represents the last number of the year. The next three numbers represent the day of manufacture. I.e.: **5101** means it was manufactured in **2015** on the **101**st day.

Allergens: Wheat, eggs.

Kosher Status : No

Country of Origin: United States of America

Allergen warning: This product was made in a facility that may also use common food allergens including milk, peanuts, tree nuts, eggs and soybean.

GMO Status: Based on information provided to us by our vendors, we cannot guarantee that this item is genetically modified organism (GMO) free.

MSDS: All items manufactured by La Rosa Bakery Inc. contains ingredients which are on the GRAS (generally recognized as safe) list. These food items do not require a MSDS (material safety data sheet) and are made in compliance with the United States of America Food, Drug and Cosmetic Act.

Certificate of Manufacture: La Rosa Bakery, Inc. certifies that all products are prepared, processed and packaged in a facility inspected by the Food and Drug Administration as well as a Third Party Auditor and applicable state or local health agencies in the United States of America, using only ingredients and packaging that are approved for food use.

Nutrition Facts			
Serving Size 2 oz (57g)			
Servings per Container			
Amount per Serving			
Calories	250	Calories from Fat 120	
% Daily Value*			
Total Fat	13g		20%
Saturated Fat	3.5g		16%
Trans Fat	0g		
Cholesterol	0mg		0%
Sodium	80mg		3%
Total Carbohydrate	32g		11%
Dietary Fiber	1g		3%
Sugars	13g		
Protein	3g		
Vitamin A	0%	Vitamin C	0%
Calcium	0%	Iron	2%
* Percent Daily Values are based on a 2,000 calorie diet. Your daily values may be higher or lower depending on your calorie needs.			
	Calories	2,000	2,500
Total Fat	Less than	65g	80g
Sat Fat	Less than	20g	25g
Cholesterol	Less than	300mg	300mg
Sodium	Less than	2,400mg	2,400mg
Total Carbohydrate		300g	375g
Dietary Fiber		25g	30g
Calories per gram			
	Fat	9	Carbohydrates 4
			Protein 4

Case UPC



Case Label

<p>SM RASPBERRY LINZER TART</p> <p>INGREDIENTS: UN-ENRICHED WHEAT FLOUR, SHORTENING (palm oil), SUGAR, RASPBERRY JAM (raspberries, sugar, corn syrup, pectin, citric acid, sodium citrate), EGGS, SALT, FLAVORS, (F D & C YELLOW #5 & #6)</p> <p>Contains: Wheat, eggs.</p> <p>NET WT 10 LBS REF # 1716</p> <p>MANUFACTURED BY: LA ROSA BAKERY, INC. SHREWSBURY, NJ 07702</p>		
--	--	--



Product Specification

Vanilla Sandwich Cookie, Item 1714



Net Case Weight	10 lbs.
Gross Case Wt.	11 lbs.
Inner Case Pack	2/5 lb. Trays
Shelf Life	10-12 Weeks
Case Dimensions	17.75 X 15.5 X 5.187
Case Cube	0.83
Storage	Cool
Lead Time	2 Weeks
Pallet tie/high	6/10

INGREDIENTS: ENRICHED WHEAT FLOUR (bleached wheat flour, malted barley flour, niacin, reduced iron, potassium bromate, thiamine mononitrate, riboflavin, folic acid) SHORTENING (palm oil), SUGAR, EGGS, ORANGE PINEAPPLE JAM (sugar, corn syrup, pineapple, high fructose corn syrup, orange peel, water, citric acid, pectin, locust bean gum, potassium sorbate as a preservative, sodium citrate, artificial flavor F D & C Yellow #6, caramel color) BAKING POWDER, SALT, FLAVORS (FD & C YELLOW #5 & #6)

Lot Code Explanation (Julian Date): The first number of the Julian Date represents the year. The last three numbers represent the day of manufacture. I.e: **5101** means it was manufactured in 2015 on the **101st** day.

Allergens: Wheat, eggs.

Kosher Status : No

Country of Origin: United States of America

Allergen warning: This product was made in a facility that may also use common food allergens including milk, peanuts, tree nuts, eggs and soybean.

GMO Status: Based on information provided to us by our vendors, we cannot guarantee that this item is genetically modified organism (GMO) free.

MSDS: All items manufactured by La Rosa Bakery Inc. contains ingredients which are on the GRAS (generally recognized as safe) list. These food items do not require a MSDS (material safety data sheet) and are made in compliance with the United States of America Food, Drug and Cosmetic Act.

Certificate of Manufacture: La Rosa Bakery, Inc. certifies that all products are prepared, processed and packaged in a facility inspected by the Food and Drug Administration as well as a Third Party Auditor and applicable state or local health agencies in the United States of America, using only ingredients and packaging that are approved for food use.

Nutrition Facts	
Serving Size 100 g	
Amount Per Serving	
Calories 230	Calories from Fat 150
% Daily Value*	
Total Fat 17g	27%
Saturated Fat 8g	42%
Trans Fat 0g	
Cholesterol 0mg	0%
Sodium 100mg	4%
Total Carbohydrate 53g	18%
Dietary Fiber 1g	4%
Sugars 30g	
Protein 4g	
Vitamin A 4%	• Vitamin C 8%
Calcium 2%	• Iron 6%
* Percent Daily Values are based on a 2,000 calorie diet. Your daily values may be higher or lower depending on your calorie needs.	
	Calories 2,000 2,500
Total Fat	Less than 65 g 80 g
Sat Fat	Less than 20 g 25 g
Cholesterol	Less than 300 mg 300 mg
Sodium	Less than 2,400 mg 2,400 mg
Total Carbohydrate	300 g 375 g
Dietary Fiber	25 g 30 g
Calories per gram:	
Fat 9	• Carbohydrate 4 • Protein 4

Case UPC



Case Label

VANILLA SANDWICH COOKIE	
INGREDIENTS: ENRICHED WHEAT FLOUR (bleached wheat flour, malted barley flour, niacin, reduced iron, potassium bromate, thiamine mononitrate, riboflavin, folic acid) SHORTENING (palm oil), SUGAR, EGGS, ORANGE PINEAPPLE JAM (sugar, corn syrup, pineapple, high fructose corn syrup, orange peel, water, citric acid, pectin, locust bean gum, potassium sorbate as a preservative, sodium citrate, artificial flavor F D & C Yellow #6, caramel color) BAKING POWDER, SALT, FLAVORS (FD & C YELLOW #5 & #6).	
Contains: Wheat, eggs.	
Net Wt. 10 lbs. Ref # 1714	
Manufactured by: La Rosa Bakery, Inc. Shrewsbury, NJ 07702	





Product Specification

Wedding Cookie, Item 1728

Ingredients: Butter, Bleached Wheat Flour (bleached wheat flour, malted barley flour, niacin, reduced iron, potassium bromate, thiamine, mononitrate, riboflavin, folic acid), Un-Enriched Wheat Flour, Pecans, Vanilla.

Net Case Weight 10 lbs.

Gross Case Wt. 11 lbs

Inner Case Pack 2/5 lb. Trays

Shelf Life 10-12 Weeks

Case Dimensions 17.75 X 15.5 X 5.1875

Case Cube 0.83

Storage Cool

Lead Time 2 Weeks

Pallet tie/high 6/10

Lot Code Explanation (Julian Date): The first number of the Julian Date represents the last number of the year. The next three numbers represent the day of manufacture. I.e.: **5101** means it was manufactured in **2015** on the **101**st day.

Allergens: Wheat, milk, nuts(pecans).

Kosher Status : No

Country of Origin: United States of America

Allergen warning: This product was made in a facility that may also use common food allergens including milk, peanuts, tree nuts, eggs and soybean.

GMO Status: Based on information provided to us by our vendors, we cannot guarantee that this item is genetically modified organism (GMO) free.

MSDS: All items manufactured by La Rosa Bakery Inc. contains ingredients which are on the GRAS (generally recognized as safe) list. These food items do not require a MSDS (material safety data sheet) and are made in compliance with the United States of America Food, Drug and Cosmetic Act.

Certificate of Manufacture: La Rosa Bakery, Inc. certifies that all products are prepared, processed and packaged in a facility inspected by the Food and Drug Administration as well as a Third Party Auditor and applicable state or local health agencies in the United States of America, using only ingredients and packaging that are approved for food use.

Nutrition Facts		
Serving Size 100 g		
Amount Per Serving		
Calories	500	Calories from Fat 270
	% Daily Value*	
Total Fat	31g	47 %
Saturated Fat	14g	71 %
Trans Fat	0g	
Cholesterol	60mg	19 %
Sodium	230mg	9 %
Total Carbohydrate	52g	17 %
Dietary Fiber	2g	8 %
Sugars	20g	
Protein	5g	
Vitamin A	15 %	Vitamin C 0 %
Calcium	4 %	Iron 10 %
* Percent Daily Values are based on a 2,000 calorie diet. Your daily values may be higher or lower depending on your calorie needs.		
	Calories	2,000 2,500
Total Fat	Less than	65 g 80 g
Sat Fat	Less than	20 g 25 g
Cholesterol	Less than	300 mg 300 mg
Sodium	Less than	2,400 mg 2,400 mg
Total Carbohydrate		300 g 375 g
Dietary Fiber		25 g 30 g
Calories per gram:		
	Fat 9	Carbohydrate 4 Protein 4

Case UPC



Case Label

WEDDING COOKIES

Ingredients: Butter, Bleached Wheat Flour (bleached wheat flour, malted barley flour, niacin, reduced iron, potassium bromate, thiamine, mononitrate, riboflavin, folic acid), Un-Enriched Wheat Flour, Pecans, Vanilla.
CONTAINS: Wheat, milk, nuts(pecans).

NET WT 10 LBS REF# 1728
Manufactured By: La Rosa Bakery, Inc.
Shrewsbury, NJ 07702



Product Specification

White Chocolate Sandwich Cookie, Item 1713



Net Case Weight	10 lbs.
Gross Case Wt.	11 lbs.
Inner Case Pack	2/5 lb. Trays
Shelf Life	10-12 Weeks
Case Dimensions	17.75 X 15.5 X 5.187
Case Cube	0.83
Storage	Cool
Lead Time	2 Weeks
Pallet tie/high	6/10

Ingredients: ENRICHED WHEAT FLOUR (bleached wheat flour, malted barley flour, niacin, reduced iron, potassium bromate, thiamine mononitrate, riboflavin, folic acid), SHORTENING (palm oil), SUGAR, CHOCOLATE FUDGE (sugar, fudge base (vegetable shortening, part hydrated (soy, cottonseed and/or canola oils) cocoa (processed with alkali), corn syrup solids, soy oil), vegetable shortening, part hydrated (palm and soy bean oils), water), EGGS, CHOCOLATE COATING (sugar, vegetable shortening (blend of partially hydrogenated soybean & coconut oils, hydrogenated cottonseed and/or palm oils. Cocoa (alkali processed), sorbitan monostearate, natural & artificial flavors, polysorbate 60, salt.) BAKING POWDER, SALT, FLAVORS, (F D & C YELLOW #5 & #6)

Lot Code Explanation (Julian Date): The first number of the Julian Date represents the last number of the year. The next three numbers represent the day of manufacture. I.e: **5101** means it was manufactured in **2015** on the **101st** day.

Allergens: Wheat, eggs, soy.

Kosher Status : No

Country of Origin: United States of America

Allergen warning: This product was made in a facility that may also use common food allergens including milk, peanuts, tree nuts, eggs and soybean.

GMO Status: Based on information provided to us by our vendors, we cannot guarantee that this item is genetically modified organism (GMO) free.

MSDS: All items manufactured by La Rosa Bakery Inc. contains ingredients which are on the GRAS (generally recognized as safe) list. These food items do not require a MSDS (material safety data sheet) and are made in compliance with the United States of America Food, Drug and Cosmetic Act.

Certificate of Manufacture: La Rosa Bakery, Inc. certifies that all products are prepared, processed and packaged in a facility inspected by the Food and Drug Administration as well as a Third Party Auditor and applicable state or local health agencies in the United States of America, using only ingredients and packaging that are approved for food use.

Nutrition Facts	
Serving Size 100 g	
Servings per Container 1	
Amount per Serving	
Calories 440	Calories from Fat 240
% Daily Value*	
Total Fat 27g	41 %
Saturated Fat 6g	29 %
Trans Fat 1.5g	
Cholesterol 0mg	0 %
Sodium 95mg	4 %
Total Carbohydrate 47g	16 %
Dietary Fiber 2g	8 %
Sugars 27g	
Protein 6g	
Vitamin A 0%	Vitamin C 0%
Calcium 2%	Iron 10%
* Percent Daily Values are based on a 2,000 calorie diet. Your daily values may be higher or lower depending on your calorie needs.	
Calories	2,000 2,500
Total Fat	Less than 65g 80g
Sat Fat	Less than 20g 25g
Cholesterol	Less than 300mg 300mg
Sodium	Less than 2,400mg 2,400mg
Total Carbohydrate	300g 375g
Dietary Fiber	25g 30g
Calories per gram	
Fat 9	Carbohydrates 4 Protein 4

Case UPC



Case Label

WHITE CHOCOLATE SANDWICH	
<small>INGREDIENTS: ENRICHED WHEAT FLOUR (bleached wheat flour, malted barley flour, niacin, reduced iron, potassium bromate, thiamine mononitrate, riboflavin, folic acid), SHORTENING (palm oil), SUGAR, CHOCOLATE FUDGE (sugar, fudge base (vegetable shortening, part hydrated (soy, cottonseed and/or canola oils) cocoa (processed with alkali), corn syrup solids, soy oil), vegetable shortening, part hydrated (palm and soy bean oils), water), EGGS, CHOCOLATE COATING (sugar, vegetable shortening (blend of partially hydrogenated soybean & coconut oils, hydrogenated cottonseed and/or palm oils. Cocoa (alkali processed), sorbitan monostearate, natural & artificial flavors, polysorbate 60, salt.) BAKING POWDER, SALT, FLAVORS, (F D & C YELLOW #5 & #6)</small>	
<small>CONTAINS: Wheat, Soy Eggs.</small>	
NET WT 10 LBS REF # 1713	
<small>MANUFACTURED BY: LA ROSA BAKERY INC. SHREWSBURY NJ 07702</small>	



Product Specification

White fudge Top Cookie, Item 1715



Net Case Weight	10 lbs.
Gross Case Wt.	11 lbs.
Inner Case Pack	2/5 lb. Trays
Shelf Life	10-12 Weeks
Case Dimensions	17.75 X 15.5 X 5.187
Case Cube	0.83
Storage	Cool
Lead Time	2 Weeks
Pallet tie/high	6/10

Ingredients: ENRICHED WHEAT FLOUR (bleached wheat flour, malted barley flour, niacin, reduced iron, potassium bromate, thiamine mononitrate, riboflavin, folic acid), SHORTENING (palm oil), SUGAR, CHOCOLATE FUDGE (sugar, fudge base (vegetable shortening, part hydrated (soy, cottonseed and/or canola oils) cocoa (processed with alkali), corn syrup solids, soy oil), vegetable shortening, part hydrated (palm and soy bean oils), water) EGGS, BAKING POWDER, SALT, FLAVORS, (F D & C YELLOW 5 & #6) RAINBOW NONPAREILS (sugar, cornstarch, FD&C colors: yellow #6 & #5, blue #1 red #3 & #40, carnauba wax, and titanium dioxide)

Lot Code Explanation (Julian Date): The first number of the Julian Date represents the year. The last three numbers represent the day of manufacture. I.e: **5101** means it was manufactured in 2015 on the **101**st day.

Allergens: Wheat, eggs, soy.

Kosher Status : No

Country of Origin: United States of America

Allergen warning: This product was made in a facility that may also use common food allergens including milk, peanuts, tree nuts, eggs and soybean.

GMO Status: Based on information provided to us by our vendors, we cannot guarantee that this item is genetically modified organism (GMO) free.

MSDS: All items manufactured by La Rosa Bakery Inc. contains ingredients which are on the GRAS (generally recognized as safe) list. These food items do not require a MSDS (material safety data sheet) and are made in compliance with the United States of America Food, Drug and Cosmetic Act.

Certificate of Manufacture: La Rosa Bakery, Inc. certifies that all products are prepared, processed and packaged in a facility inspected by the Food and Drug Administration as well as a Third Party Auditor and applicable state or local health agencies in the United States of America, using only ingredients and packaging that are approved for food use.

Nutrition Facts

Serving Size 100 g	
Servings per Container	
Amount per Serving	
Calories 430	Calories from Fat 210
% Daily Value*	
Total Fat 23g	36 %
Saturated Fat 7g	34 %
Trans Fat 1.5g	
Cholesterol 0mg	0 %
Sodium 100mg	4 %
Total Carbohydrate 53g	18 %
Dietary Fiber 1g	6 %
Sugars 34g	
Protein 4g	
Vitamin A 0 %	Vitamin C 0 %
Calcium 2 %	Iron 10 %
* Percent Daily Values are based on a 2,000 calorie diet. Your daily values may be higher or lower depending on your calorie needs.	
	Calories 2,000 2,500
Total Fat	Less than 65g 80g
Sat Fat	Less than 20g 25g
Cholesterol	Less than 300mg 300mg
Sodium	Less than 2,400mg 2,400mg
Total Carbohydrate	300g 375g
Dietary Fiber	25g 30g
Calories per gram	
Fat 9 • Carbohydrates 4 • Protein 4	

Case UPC



Case Label

WHITE FUDGE TOP

INGREDIENTS: ENRICHED WHEAT FLOUR (bleached wheat flour, malted barley flour, niacin, reduced iron, potassium bromate, thiamine mononitrate, riboflavin, folic acid), SHORTENING (palm oil), SUGAR, CHOCOLATE FUDGE (sugar, fudge base (vegetable shortening, part hydrated (soy, cottonseed and/or canola oils) cocoa (processed with alkali), corn syrup solids, soy oil), vegetable shortening, part hydrated (palm and soy bean oils), water) EGGS, BAKING POWDER, SALT, FLAVORS, (F D & C YELLOW 5 & #6) RAINBOW NONPAREILS (sugar, cornstarch, FD&C colors: yellow #6 & #5, blue #1 red #3 & #40, carnauba wax, and titanium dioxide)

Contains: Wheat, Soy, Eggs

NET WT 10 LBS REF # 1715
MANUFACTURED BY: LA ROSA BAKERY, INC.
SHREWSBURY, NJ 07702



Product Specification

White Raspberry Sandwich Cookie, Item 1712



Net Case Weight	10 Lbs.
Gross Case Wt.	11 Lbs.
Inner Case Pack	2/5 Lb. Trays
Shelf Life	10-12 Weeks
Case Dimensions	17.75 X 15.5 X 5.1875
Case Cube	0.83
Storage	Cool
Lead Time	2 Weeks
Pallet tie/high	6/10

Ingredients: ENRICHED WHEAT FLOUR (bleached wheat flour, malted barley flour, niacin, reduced iron, potassium bromate, thiamine mononitrate, riboflavin, folic acid) , SUGAR, SHORTENING (palm oil), RASPBERRY JAM (raspberries, sugar, corn syrup, pectin, citric acid and sodium citrate). EGGS, CHOCOLATE COATING (sugar, vegetable shortening (blend of partially hydrogenated soybean & coconut oils, hydrogenated cottonseed and/or palm oils. Cocoa (alkali processed), sorbitan monosterate, natural & artificial flavors, polysorbate 60, salt.) RED SPRINKLES (corn starch, soya lecithin, gum arabic), BAKING POWDER, SALT, FLAVORS, (F D & C YELLOW #5 & #6, RED# 40)

Lot Code Explanation (Julian Date): The first number of the Julian Date represents the last number of the year. The next three numbers represent the day of manufacture. I.e.: **5101** means it was manufactured in **2015** on the **101st** day.

Allergens: Wheat, eggs, soy.

Kosher Status : No

Country of Origin: United States of America

Allergen warning: This product was made in a facility that may also use common food allergens including milk, peanuts, tree nuts, eggs and soybean.

GMO Status: Based on information provided to us by our vendors, we cannot guarantee that this item is genetically modified organism (GMO) free.

MSDS: All items manufactured by La Rosa Bakery Inc. contains ingredients which are on the GRAS (generally recognized as safe) list. These food items do not require a MSDS (material safety data sheet) and are made in compliance with the United States of America Food, Drug and Cosmetic Act.

Certificate of Manufacture: La Rosa Bakery, Inc. certifies that all products are prepared, processed and packaged in a facility inspected by the Food and Drug Administration as well as a Third Party Auditor and applicable state or local health agencies in the United States of America, using only ingredients and packaging that are approved for food use.

Nutrition Facts	
Serving Size 2 oz (57g)	
Servings per Container	
Amount per Serving	
Calories 220	Calories from Fat 100
% Daily Value*	
Total Fat 11g	17 %
Saturated Fat 3g	14 %
<i>Trans</i> Fat 0g	
Cholesterol 0mg	0 %
Sodium 55mg	2 %
Total Carbohydrate 29g	10 %
Dietary Fiber 1g	2 %
Sugars 16g	
Protein 2g	
Vitamin A 0 %	Vitamin C 2 %
Calcium 2 %	Iron 4 %
* Percent Daily Values are based on a 2,000 calorie diet. Your daily values may be higher or lower depending on your calorie needs.	
	Calories 2,000 2,500
Total Fat	Less than 65g 80g
Sat Fat	Less than 20g 25g
Cholesterol	Less than 300mg 300mg
Sodium	Less than 2,400mg 2,400mg
Total Carbohydrate	300g 375g
Dietary Fiber	25g 30g
Calories per gram	
Fat 9 • Carbohydrates 4 • Protein 4	

Case UPC



Case Label

WHITE RASPBERRY SANDWICH	
<small>INGREDIENTS: ENRICHED WHEAT FLOUR (bleached wheat flour, malted barley flour, niacin, reduced iron, potassium bromate, thiamine mononitrate, riboflavin, folic acid) , SUGAR, SHORTENING (palm oil), RASPBERRY JAM (raspberries, sugar, corn syrup, pectin, citric acid and sodium citrate). EGGS, CHOCOLATE COATING (sugar, vegetable shortening (blend of partially hydrogenated soybean & coconut oils, hydrogenated cottonseed and/or palm oils. Cocoa (alkali processed), sorbitan monosterate, natural & artificial flavors, polysorbate 60, salt.) RED SPRINKLES (corn starch, soya lecithin, gum arabic), BAKING POWDER, SALT, FLAVORS, (F D & C YELLOW #5 & #6, RED# 40)</small>	
<small>Contains: Wheat, eggs, soy.</small>	
NET WT 10 LBS	REF # 1712
<small>MANUFACTURED BY: LA ROSA BAKERY INC. SHREWSBURY NJ 07702</small>	



Product Specification

Yellow Dip Cookie, Item 1707



Net Case Weight	10 lbs.
Gross Case Wt.	11 lbs.
Inner Case Pack	2/5 lbs. trays
Shelf Life	10-12 weeks
Case Dimensions	17.75 x 15.5 x 5.1875
Case Cube	0.83
Storage	Cool
Lead Time	2 weeks
Pallet tie/high	6/10

Ingredients: ENRICHED WHEAT FLOUR (bleached wheat flour, malted barley flour, niacin, reduced iron, potassium bromate, thiamine mononitrate, riboflavin, folic acid), SHORTENING (palm oil), SUGAR, EGGS, YELLOW SPRINKLES(corn starch, soya lecithin, gum arabic),CHOCOLATE COATING (sugar,vegetable shortening(blend of partially hydrogenated soybean & coconut oils, hydrogenated cottonseed and/or palm oils. Cocoa (alkali processed),sorbitan monostearate, natural & artificial flavors, polysorbate 60, salt.), BAKING POWDER, SALT, FLAVORS,(F D & C YELLOW #5 & #6)

Lot Code Explanation (Julian Date): The first number of the Julian Date represents the year. The last three numbers represent the day of manufacture.

Allergens: Wheat, Eggs, Soy

Kosher Status : No

Country of Origin: United States of America

Allergen warning: This product was made in a facility that may also use common food allergens including milk, peanuts, tree nuts, eggs and soybean.

GMO Status: Based on information provided to us by our vendors, we cannot guarantee that this item is genetically modified organism (GMO) free.

MSDS: All items manufactured by La Rosa Bakery Inc. contains ingredients which are on the GRAS (generally recognized as safe) list. These food items do not require a MSDS (material safety data sheet) and are made in compliance with the United States of America Food, Drug and Cosmetic Act.

Certificate of Manufacture: La Rosa Bakery, Inc. certifies that all products are prepared, processed and packaged in a facility inspected by the Food and Drug Administration as well as a Third Party Auditor and applicable state or local health agencies in the United States of America, using only ingredients and packaging that are approved for food use.

Nutrition Facts	
Serving Size 2 oz (57g)	
Servings per Container	
Amount per Serving	
Calories 220	Calories from Fat 100
% Daily Value*	
Total Fat 11g	17 %
Saturated Fat 4g	21 %
Trans Fat 0g	
Cholesterol 0mg	0 %
Sodium 55mg	2 %
Total Carbohydrate 30g	10 %
Dietary Fiber 0g	0 %
Sugars 20g	
Protein 2g	
Vitamin A 0 %	Vitamin C 0 %
Calcium 0 %	Iron 4 %
* Percent Daily Values are based on a 2,000 calorie diet. Your daily values may be higher or lower depending on your calorie needs.	
	Calories 2,000 2,500
Total Fat	Less than 65g 80g
Sat Fat	Less than 20g 25g
Cholesterol	Less than 300mg 300mg
Sodium	Less than 2,400mg 2,400mg
Total Carbohydrate	300g 375g
Dietary Fiber	25g 30g
Calories per gram	
Fat 9 • Carbohydrates 4 • Protein 4	

Case UPC



Case Label

YELLOW DIP COOKIES

INGREDIENTS: ENRICHED WHEAT FLOUR (bleached wheat flour, malted barley flour, niacin, reduced iron, potassium bromate, thiamine mononitrate, riboflavin, folic acid), SHORTENING (palm oil), SUGAR, EGGS, YELLOW SPRINKLES(corn starch, soya lecithin, gum arabic),CHOCOLATE COATING (sugar,vegetable shortening(blend of partially hydrogenated soybean & coconut oils, hydrogenated cottonseed and/or palm oils. Cocoa (alkali processed),sorbitan monostearate, natural & artificial flavors, polysorbate 60, salt.), BAKING POWDER, SALT, FLAVORS,(F D & C YELLOW #5 & #6)

CONTAINS: Wheat, Eggs, Soy.

NET WT. 10 LBS. REF # 1707
MANUFACTURED BY: LA ROSA BAKERY, INC.
SHREWSBURY, NJ 07702